

Datasheet for ABIN6293706

anti-SULT1C4 antibody[Go to Product page](#)**1** Image

Overview

Quantity:	50 µL
Target:	SULT1C4
Reactivity:	Mouse, Rat
Host:	Rabbit
Clonality:	Polyclonal
Conjugate:	This SULT1C4 antibody is un-conjugated
Application:	Western Blotting (WB)

Product Details

Immunogen:	Recombinant protein of human SULT1C4
Isotype:	IgG
Purification:	Affinity purification

Target Details

Target:	SULT1C4
Alternative Name:	SULT1C4 (SULT1C4 Products)
Background:	Sulfotransferase enzymes catalyze the sulfate conjugation of many hormones, neurotransmitters, drugs, and xenobiotic compounds. These cytosolic enzymes are different in their tissue distributions and substrate specificities. The gene structure (number and length of exons) is similar among family members. This gene encodes a protein that belongs to the SULT1 subfamily, responsible for transferring a sulfo moiety from PAPS to phenol-containing

Target Details

	compounds.
Molecular Weight:	35.52 kDa
Gene ID:	27233
UniProt:	O75897

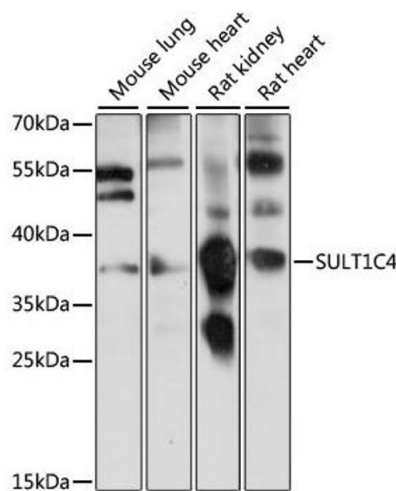
Application Details

Application Notes:	WB 1:200 - 1:2000
Comment:	Expressed at high levels in fetal lung and kidney and at low levels in fetal heart, adult kidney, ovary and spinal chord
Restrictions:	For Research Use only

Handling

Buffer:	PBS with 0.02 % sodium azide, 50 % glycerol, pH 7.3.
Preservative:	Sodium azide
Precaution of Use:	This product contains Sodium azide: a POISONOUS AND HAZARDOUS SUBSTANCE which should be handled by trained staff only.
Storage:	-20 °C
Storage Comment:	Store at -20C. Avoid freeze / thaw cycles.

Images



Western Blotting

Image 1. Western blot analysis of extracts of various cell lines, using SULT1C4 antibody (ABIN6293706) at 1:1000 dilution. Secondary antibody: HRP Goat Anti-Rabbit IgG (H+L) at 1:10000 dilution. Lysates/proteins: 25ug per lane. Blocking buffer: 3% nonfat dry milk in TBST. Detection: ECL Basic Kit. Exposure time: 2s.