

Datasheet for ABIN6293747 anti-RBMX antibody



[Go to Product page](#)

1 Image

Overview

Quantity:	50 µL
Target:	RBMX
Reactivity:	Human, Monkey
Host:	Rabbit
Clonality:	Polyclonal
Conjugate:	This RBMX antibody is un-conjugated
Application:	Western Blotting (WB)

Product Details

Immunogen:	Recombinant protein of human RBMX
Isotype:	IgG
Purification:	Affinity purification

Target Details

Target:	RBMX
Alternative Name:	RBMX (RBMX Products)
Background:	This gene belongs to the RBMY gene family which includes candidate Y chromosome spermatogenesis genes. This gene, an active X chromosome homolog of the Y chromosome RBMY gene, is widely expressed whereas the RBMY gene evolved a male-specific function in spermatogenesis. Pseudogenes of this gene, found on chromosomes 1, 4, 9, 11, and 6, were likely derived by retrotransposition from the original gene. Alternatively spliced transcript

Target Details

variants encoding different isoforms have been identified. A snoRNA gene (SNORD61) is found in one of its introns.

Molecular Weight: 42.332 kDa

Gene ID: 27316

UniProt: [P38159](#)

Pathways: [Chromatin Binding](#), [Ribonucleoprotein Complex Subunit Organization](#)

Application Details

Application Notes: WB 1:200 - 1:2000

Comment: Expressed strongly in oral keratinocytes, but only weakly detected in oral squamous cell carcinomas (at protein level)

Restrictions: For Research Use only

Handling

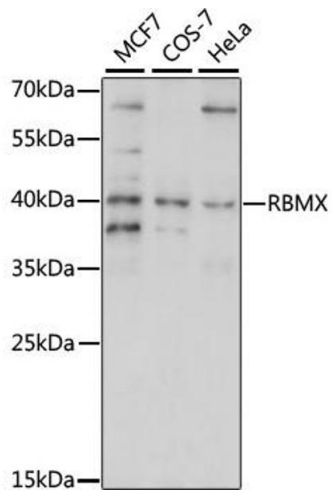
Buffer: PBS with 0.02 % sodium azide, 50 % glycerol, pH 7.3.

Preservative: Sodium azide

Precaution of Use: This product contains Sodium azide: a POISONOUS AND HAZARDOUS SUBSTANCE which should be handled by trained staff only.

Storage: -20 °C

Storage Comment: Store at -20C. Avoid freeze / thaw cycles.



Western Blotting

Image 1. Western blot analysis of extracts of various cell lines, using RBMX antibody (ABIN6293747) at 1:1000 dilution. Secondary antibody: HRP Goat Anti-Rabbit IgG (H+L) at 1:10000 dilution. Lysates/proteins: 25ug per lane. Blocking buffer: 3% nonfat dry milk in TBST. Detection: ECL Enhanced Kit. Exposure time: 30s.