

Datasheet for ABIN6293840

anti-ZFP28 antibody

1 Image



[Go to Product page](#)

Overview

Quantity:	50 µL
Target:	ZFP28
Reactivity:	Mouse, Rat
Host:	Rabbit
Clonality:	Polyclonal
Conjugate:	This ZFP28 antibody is un-conjugated
Application:	Western Blotting (WB)

Product Details

Immunogen:	Recombinant protein of human ZFP28
Isotype:	IgG
Purification:	Affinity purification

Target Details

Target:	ZFP28
Alternative Name:	ZFP28 (ZFP28 Products)
Molecular Weight:	98.705 kDa
Gene ID:	140612
UniProt:	Q8NHY6

Application Details

Application Notes: WB 1:500 - 1:2000

Restrictions: For Research Use only

Handling

Buffer: PBS with 0.02 % sodium azide, 50 % glycerol, pH 7.3.

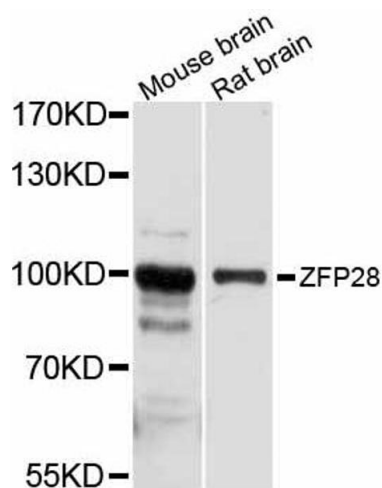
Preservative: Sodium azide

Precaution of Use: This product contains Sodium azide: a POISONOUS AND HAZARDOUS SUBSTANCE which should be handled by trained staff only.

Storage: -20 °C

Storage Comment: Store at -20C. Avoid freeze / thaw cycles.

Images



Western Blotting

Image 1. Western blot analysis of extracts of various cell lines, using ZFP28 antibody (ABIN6293840) at 1:1000 dilution. Secondary antibody: HRP Goat Anti-Rabbit IgG (H+L) at 1:10000 dilution. Lysates/proteins: 25ug per lane. Blocking buffer: 3% nonfat dry milk in TBST. Detection: ECL Basic Kit. Exposure time: 10s.