

Datasheet for ABIN6293886

anti-PPP1R3B antibody[Go to Product page](#)**1** Image

Overview

Quantity:	50 µL
Target:	PPP1R3B
Reactivity:	Mouse, Rat
Host:	Rabbit
Clonality:	Polyclonal
Conjugate:	This PPP1R3B antibody is un-conjugated
Application:	Western Blotting (WB)

Product Details

Immunogen:	Recombinant protein of human PPP1R3B
Isotype:	IgG
Purification:	Affinity purification

Target Details

Target:	PPP1R3B
Alternative Name:	PPP1R3B (PPP1R3B Products)
Background:	This gene encodes the catalytic subunit of the serine/threonine phosphatase, protein phosphatase-1. The encoded protein is expressed in liver and skeletal muscle tissue and may be involved in regulating glycogen synthesis in these tissues. This gene may be involved in type 2 diabetes and maturity-onset diabetes of the young. Alternate splicing results in multiple transcript variants that encode the same protein.

Target Details

Molecular Weight:	32.695 kDa
Gene ID:	79660
UniProt:	Q86XI6
Pathways:	Cellular Glucan Metabolic Process , Regulation of Carbohydrate Metabolic Process

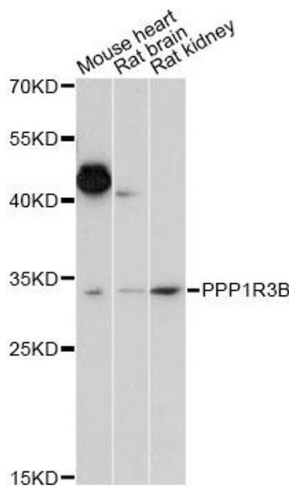
Application Details

Application Notes:	WB 1:500 - 1:2000
Comment:	Highly expressed in the liver and, at lower levels, in skeletal muscle, including in vastus lateralis, gastrocnemius and soleus (at protein level), Highest mRNA levels are observed in skeletal muscle, and only moderate levels in liver and heart, Weak expression in placenta and lung
Restrictions:	For Research Use only

Handling

Buffer:	PBS with 0.02 % sodium azide, 50 % glycerol, pH 7.3.
Preservative:	Sodium azide
Precaution of Use:	This product contains Sodium azide: a POISONOUS AND HAZARDOUS SUBSTANCE which should be handled by trained staff only.
Storage:	-20 °C
Storage Comment:	Store at -20C. Avoid freeze / thaw cycles.

Images



Western Blotting

Image 1. Western blot analysis of extracts of various cell lines, using PPP1R3B antibody (ABIN6293886) at 1:1000 dilution. Secondary antibody: HRP Goat Anti-Rabbit IgG (H+L) at 1:10000 dilution. Lysates/proteins: 25ug per lane. Blocking buffer: 3% nonfat dry milk in TBST. Detection: ECL Enhanced Kit. Exposure time: 15s.