

Datasheet for ABIN6293894

anti-MBD3L1 antibody[Go to Product page](#)**1** Image

Overview

Quantity:	50 µL
Target:	MBD3L1
Reactivity:	Mouse, Rat
Host:	Rabbit
Clonality:	Polyclonal
Conjugate:	This MBD3L1 antibody is un-conjugated
Application:	Western Blotting (WB)

Product Details

Immunogen:	Recombinant protein of human MBD3L1
Isotype:	IgG
Purification:	Affinity purification

Target Details

Target:	MBD3L1
Alternative Name:	MBD3L1 (MBD3L1 Products)
Background:	This gene encodes a protein that is related to methyl-CpG-binding proteins but lacks the methyl-CpG binding domain. The protein is localized to discrete areas in the nucleus, and expression appears to be restricted to round spermatids, suggesting that the protein plays a role in the postmeiotic stages of male germ cell development.
Molecular Weight:	21.616 kDa

Target Details

Gene ID:	85509
UniProt:	Q8WWY6

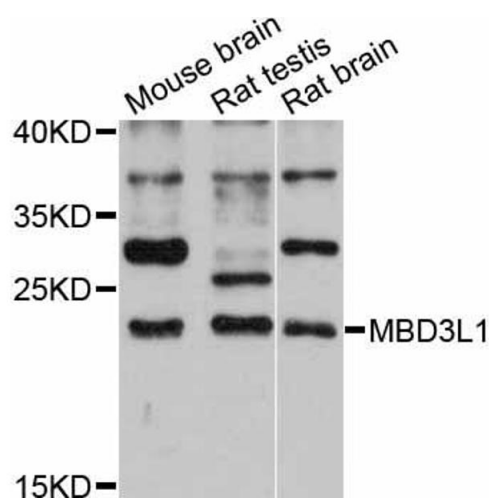
Application Details

Application Notes:	WB 1:500 - 1:1000
Comment:	Highly expressed in testis, Detected at low levels in pancreas, Not detected in the other tissues tested
Restrictions:	For Research Use only

Handling

Buffer:	PBS with 0.02 % sodium azide, 50 % glycerol, pH 7.3.
Preservative:	Sodium azide
Precaution of Use:	This product contains Sodium azide: a POISONOUS AND HAZARDOUS SUBSTANCE which should be handled by trained staff only.
Storage:	-20 °C
Storage Comment:	Store at -20C. Avoid freeze / thaw cycles.

Images



Western Blotting

Image 1. Western blot analysis of extracts of various cell lines, using MBD3L1 antibody (ABIN6293894) at 1:3000 dilution. Secondary antibody: HRP Goat Anti-Rabbit IgG (H+L) at 1:10000 dilution. Lysates/proteins: 25ug per lane. Blocking buffer: 3% nonfat dry milk in TBST. Detection: ECL Enhanced Kit. Exposure time: 90s.