

Datasheet for ABIN6293996

anti-KCNU1 antibody[Go to Product page](#)**1** Image

Overview

Quantity:	50 µL
Target:	KCNU1
Reactivity:	Rat
Host:	Rabbit
Clonality:	Polyclonal
Conjugate:	This KCNU1 antibody is un-conjugated
Application:	Western Blotting (WB)

Product Details

Immunogen:	Recombinant protein of human KCNU1
Isotype:	IgG
Purification:	Affinity purification

Target Details

Target:	KCNU1
Alternative Name:	KCNU1 (KCNU1 Products)
Background:	<p>This gene encodes a member of the potassium channel family of proteins. The encoded voltage-gated ion channel allows the outward flow of potassium ions during plasma membrane hyperpolarization in sperm. Opening of this channel may be regulated by calcium ion levels.</p> <p>Homozygous knockout mice that lack the related mouse gene exhibit male sterility. Alternative splicing results in multiple transcript variants.</p>

Target Details

Molecular Weight:	129.543 kDa
Gene ID:	157855
UniProt:	A8MYU2

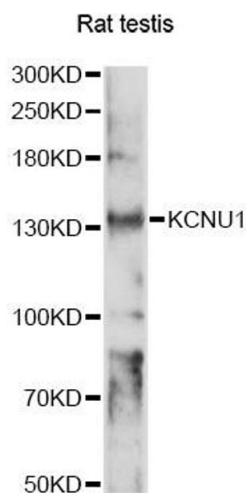
Application Details

Application Notes:	WB 1:500 - 1:2000
Comment:	Testis-specific
Restrictions:	For Research Use only

Handling

Buffer:	PBS with 0.02 % sodium azide, 50 % glycerol, pH 7.3.
Preservative:	Sodium azide
Precaution of Use:	This product contains Sodium azide: a POISONOUS AND HAZARDOUS SUBSTANCE which should be handled by trained staff only.
Storage:	-20 °C
Storage Comment:	Store at -20C. Avoid freeze / thaw cycles.

Images



Western Blotting

Image 1. Western blot analysis of extracts of rat testis, using KCNU1 antibody (ABIN6293996) at 1:1000 dilution. Secondary antibody: HRP Goat Anti-Rabbit IgG (H+L) at 1:10000 dilution. Lysates/proteins: 25ug per lane. Blocking buffer: 3% nonfat dry milk in TBST. Detection: ECL Basic Kit. Exposure time: 90s.