

Datasheet for ABIN6294144

anti-LARP4B antibody[Go to Product page](#)**1** Image

Overview

| | |
|--------------|---------------------------------------|
| Quantity: | 50 µL |
| Target: | LARP4B |
| Reactivity: | Human, Mouse, Rat |
| Host: | Rabbit |
| Clonality: | Polyclonal |
| Conjugate: | This LARP4B antibody is un-conjugated |
| Application: | Western Blotting (WB) |

Product Details

| | |
|---------------|------------------------------------|
| Immunogen: | Recombinant Protein of human LARP5 |
| Isotype: | IgG |
| Purification: | Affinity purification |

Target Details

| | |
|-------------------|---|
| Target: | LARP4B |
| Alternative Name: | LARP4B (LARP4B Products) |
| Background: | This gene encodes a member of an evolutionarily conserved protein family implicated in RNA metabolism and translation. Members of this family are characterized by the presence of an La motif, which is often located adjacent to one or more RNA recognition motifs (RRM). Together, the two motifs constitute the functional region of the protein and enable its interaction with the RNA substrate. This protein family is divided into five sub-families: the genuine La proteins and |

Target Details

four La-related protein (LARP) sub-families. The protein encoded by this gene belongs to LARP sub-family 4. It is a cytoplasmic protein that may play a stimulatory role in translation.

Molecular Weight: 80.552 kDa

Gene ID: 23185

UniProt: [Q92615](#)

Pathways: [SARS-CoV-2 Protein Interactome](#), [The Global Phosphorylation Landscape of SARS-CoV-2 Infection](#)

Application Details

Application Notes: WB 1:500 - 1:2000

Restrictions: For Research Use only

Handling

Buffer: PBS with 0.02 % sodium azide, 50 % glycerol, pH 7.3.

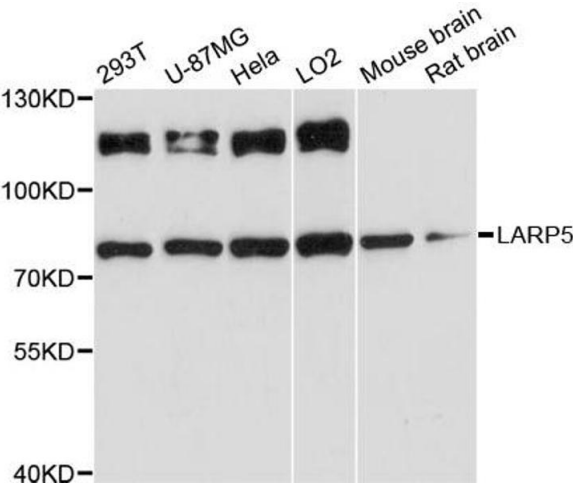
Preservative: Sodium azide

Precaution of Use: This product contains Sodium azide: a POISONOUS AND HAZARDOUS SUBSTANCE which should be handled by trained staff only.

Storage: -20 °C

Storage Comment: Store at -20C. Avoid freeze / thaw cycles.

Images



Western Blotting

Image 1. Western blot analysis of extracts of various cell lines, using LARP5 antibody (ABIN6294144) at 1:3000 dilution. Secondary antibody: HRP Goat Anti-Rabbit IgG (H+L) at 1:10000 dilution. Lysates/proteins: 25ug per lane. Blocking buffer: 3% nonfat dry milk in TBST. Detection: ECL Basic Kit. Exposure time: 90s.