

Datasheet for ABIN6294150

**anti-LINS antibody****1** Image[Go to Product page](#)

## Overview

Quantity:	50 µL
Target:	LINS
Reactivity:	Human, Mouse, Rat
Host:	Rabbit
Clonality:	Polyclonal
Conjugate:	This LINS antibody is un-conjugated
Application:	Western Blotting (WB)

## Product Details

Immunogen:	Recombinant protein of human LINS1
Isotype:	IgG
Purification:	Affinity purification

## Target Details

Target:	LINS
Alternative Name:	LINS1 ( <a href="#">LINS Products</a> )
Background:	The Drosophila segment polarity gene lin encodes a protein, lines, which plays important roles in development of the epidermis and hindgut. This gene encodes a protein containing a lines-like domain. This gene is located on chromosome 15 and clustered with the gene encoding ankyrin repeat and SOCS box-containing protein 7. Alternative splicing results in multiple transcript variants.

## Target Details

Molecular Weight: 85.857 kDa

Gene ID: 55180

UniProt: [Q8NG48](#)

## Application Details

Application Notes: WB 1:200 - 1:2000

Comment: Expressed in adult testis, prostate, prostate, spleen, thymus, skeletal muscle, fetal kidney and brain

Restrictions: For Research Use only

## Handling

Buffer: PBS with 0.02 % sodium azide, 50 % glycerol, pH 7.3.

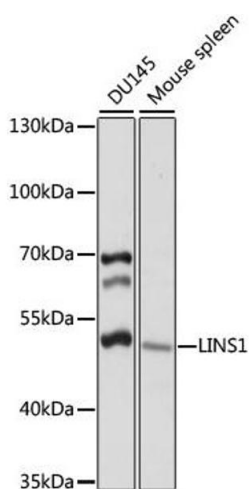
Preservative: Sodium azide

Precaution of Use: This product contains Sodium azide: a POISONOUS AND HAZARDOUS SUBSTANCE which should be handled by trained staff only.

Storage: -20 °C

Storage Comment: Store at -20C. Avoid freeze / thaw cycles.

## Images



### Western Blotting

**Image 1.** Western blot analysis of extracts of various cell lines, using LINS1 antibody (ABIN6294150) at 1:1000 dilution. Secondary antibody: HRP Goat Anti-Rabbit IgG (H+L) at 1:10000 dilution. Lysates/proteins: 25ug per lane. Blocking buffer: 3% nonfat dry milk in TBST. Detection: ECL Basic Kit. Exposure time: 10s.