

Datasheet for ABIN629586
anti-ECHDC3 antibody (N-Term)



[Go to Product page](#)

1 Image

Overview

Quantity:	100 µg
Target:	ECHDC3
Binding Specificity:	N-Term
Reactivity:	Rat, Human, Mouse
Host:	Rabbit
Clonality:	Polyclonal
Conjugate:	This ECHDC3 antibody is un-conjugated
Application:	Western Blotting (WB)

Product Details

Immunogen:	ECHDC3 antibody was raised using the N terminal of ECHDC3 corresponding to a region with amino acids SLAMLKSLQSDILHDADSNDLKVIIISAEGPVFSSGHDLDELTEEQGRDY
Specificity:	ECHDC3 antibody was raised against the N terminal of ECHDC3
Purification:	Purified

Target Details

Target:	ECHDC3
Alternative Name:	ECHDC3 (ECHDC3 Products)
Background:	ECHDC3 possesses catalytic activity.
Molecular Weight:	40 kDa (MW of target protein)

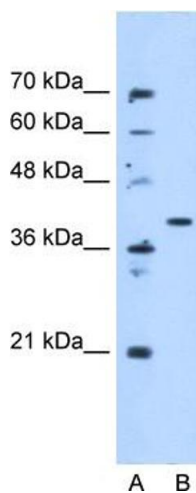
Application Details

Application Notes:	WB: 5 µg/mL Optimal conditions should be determined by the investigator.
Comment:	ECHDC3 Blocking Peptide, catalog no. 33R-8576, is also available for use as a blocking control in assays to test for specificity of this ECHDC3 antibody
Restrictions:	For Research Use only

Handling

Format:	Lyophilized
Reconstitution:	Lyophilized powder. Add distilled water for a 1 mg/mL concentration of ECHDC3 antibody in PBS
Concentration:	Lot specific
Buffer:	PBS
Handling Advice:	Avoid repeated freeze/thaw cycles. Dilute only prior to immediate use.
Storage:	4 °C/-20 °C
Storage Comment:	Store at 2-8 °C for short periods. For longer periods of storage, store at -20 °C.

Images



Western Blotting

Image 1. ECHDC3 antibody used at 5 ug/ml to detect target protein.