

Datasheet for ABIN629596
anti-LOC728227 antibody (C-Term)



[Go to Product page](#)

2 Images

Overview

Quantity:	100 µg
Target:	LOC728227
Binding Specificity:	C-Term
Reactivity:	Human
Host:	Rabbit
Clonality:	Polyclonal
Conjugate:	This LOC728227 antibody is un-conjugated
Application:	Immunohistochemistry (IHC), Western Blotting (WB)

Product Details

Immunogen:	LOC728227 antibody was raised using the C terminal of LOC728227 corresponding to a region with amino acids GAGGAKSRGGQKAASARVKKPRRRGGKKPGQAKSHGGREKAAAAGCKKP
Specificity:	LOC728227 antibody was raised against the C terminal of LOC728227
Purification:	Purified

Target Details

Target:	LOC728227
Alternative Name:	LOC728227 (LOC728227 Products)
Background:	The function of LOC728227 protein is not widely studied, and is yet to be elucidated fully.
Molecular Weight:	48 kDa (MW of target protein)

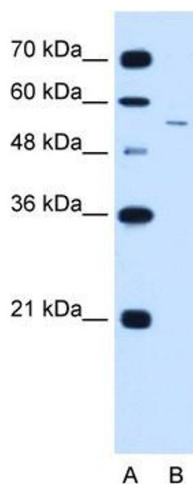
Application Details

Application Notes:	WB: 2.5 µg/mL, IHC: 4-8 µg/mL Optimal conditions should be determined by the investigator.
Comment:	LOC728227 Blocking Peptide, catalog no. 33R-3155, is also available for use as a blocking control in assays to test for specificity of this LOC728227 antibody
Restrictions:	For Research Use only

Handling

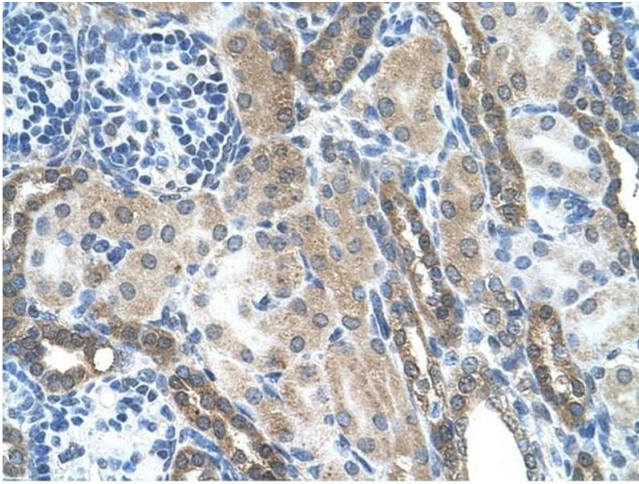
Format:	Lyophilized
Reconstitution:	Lyophilized powder. Add distilled water for a 1 mg/mL concentration of LOC728227 antibody in PBS
Concentration:	Lot specific
Buffer:	PBS
Handling Advice:	Avoid repeated freeze/thaw cycles. Dilute only prior to immediate use.
Storage:	4 °C/-20 °C
Storage Comment:	Store at 2-8 °C for short periods. For longer periods of storage, store at -20 °C.

Images



Western Blotting

Image 1. LOC728227 antibody used at 2.5 µg/ml to detect target protein.



Immunohistochemistry

Image 2. LOC728227 antibody was used for immunohistochemistry at a concentration of 4-8 ug/ml to stain Epithelial cells of renal tubule (arrows) in Human Kidney. Magnification is at 400X