

Datasheet for ABIN629599  
**anti-CBR1 antibody (C-Term)**



[Go to Product page](#)

1 Image

## Overview

Quantity:	100 µg
Target:	CBR1
Binding Specificity:	C-Term
Reactivity:	Human, Mouse
Host:	Rabbit
Clonality:	Polyclonal
Conjugate:	This CBR1 antibody is un-conjugated
Application:	Western Blotting (WB)

## Product Details

Immunogen:	Carbonyl Reductase 1 antibody was raised using the C terminal of CBR1 corresponding to a region with amino acids PGWVRTDMAGPKATKSPEEGAETPVYLALLPPDAEGPHGQFVSEKRVEQW
Specificity:	Carbonyl Reductase 1 antibody was raised against the C terminal of CBR1
Purification:	Purified

## Target Details

Target:	CBR1
Alternative Name:	Carbonyl Reductase 1 ( <a href="#">CBR1 Products</a> )
Background:	Carbonyl reductase is one of several monomeric, NADPH-dependent oxidoreductases having wide specificity for carbonyl compounds. This enzyme is widely distributed in human tissues.

## Target Details

Another carbonyl reductase gene, CRB3, lies close to this gene on chromosome 21q.

Molecular Weight: 30 kDa (MW of target protein)

## Application Details

Application Notes: WB: 1.25 µg/mL  
Optimal conditions should be determined by the investigator.

Comment: Carbonyl Reductase 1 Blocking Peptide, catalog no. 33R-7140, is also available for use as a blocking control in assays to test for specificity of this Carbonyl Reductase 1 antibody

Restrictions: For Research Use only

## Handling

Format: Lyophilized

Reconstitution: Lyophilized powder. Add distilled water for a 1 mg/mL concentration of CBR1 antibody in PBS

Concentration: Lot specific

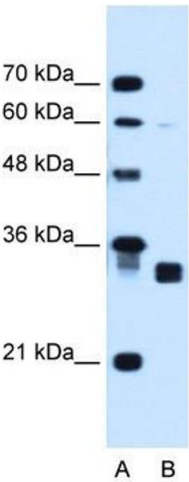
Buffer: PBS

Handling Advice: Avoid repeated freeze/thaw cycles.  
Dilute only prior to immediate use.

Storage: 4 °C/-20 °C

Storage Comment: Store at 2-8 °C for short periods. For longer periods of storage, store at -20 °C.

## Images



### Western Blotting

**Image 1.** Carbonyl Reductase 1 antibody used at 1.25 ug/ml to detect target protein.