

Datasheet for ABIN629601
anti-NAMPT antibody (C-Term)



[Go to Product page](#)

2 Images

Overview

Quantity:	100 µg
Target:	NAMPT
Binding Specificity:	C-Term
Reactivity:	Human, Rat, Mouse, Dog
Host:	Rabbit
Clonality:	Polyclonal
Conjugate:	This NAMPT antibody is un-conjugated
Application:	Western Blotting (WB), Immunohistochemistry (IHC)

Product Details

Immunogen:	PBEF1 antibody was raised using the C terminal of PBEF1 corresponding to a region with amino acids VTLEEGKGDLEEYGGDLLHTVFKNGKVTKSYSFDEIRKNAQLNIELEAAH
Specificity:	PBEF1 antibody was raised against the C terminal of PBEF1
Purification:	Purified

Target Details

Target:	NAMPT
Alternative Name:	PBEF1 (NAMPT Products)
Background:	PBEF1 catalyzes the condensation of nicotinamide with 5-phosphoribosyl-1-pyrophosphate to yield nicotinamide mononucleotide, one step in the biosynthesis of nicotinamide adenine dinucleotide. The protein is an adipokine that is localized to the bloodstream and has various

Target Details

functions, including the promotion of vascular smooth muscle cell maturation and inhibition of neutrophil apoptosis. It also activates insulin receptor and has insulin-mimetic effects, lowering blood glucose and improving insulin sensitivity. The protein is highly expressed in visceral fat and serum levels of the protein correlate with obesity.

Molecular Weight: 54 kDa (MW of target protein)

Application Details

Application Notes: WB: 1.25 µg/mL, IHC: 4-8 µg/mL
Optimal conditions should be determined by the investigator.

Comment: PBEF1 Blocking Peptide, catalog no. 33R-9851, is also available for use as a blocking control in assays to test for specificity of this PBEF1 antibody

Restrictions: For Research Use only

Handling

Format: Lyophilized

Reconstitution: Lyophilized powder. Add distilled water for a 1 mg/mL concentration of PBEF1 antibody in PBS

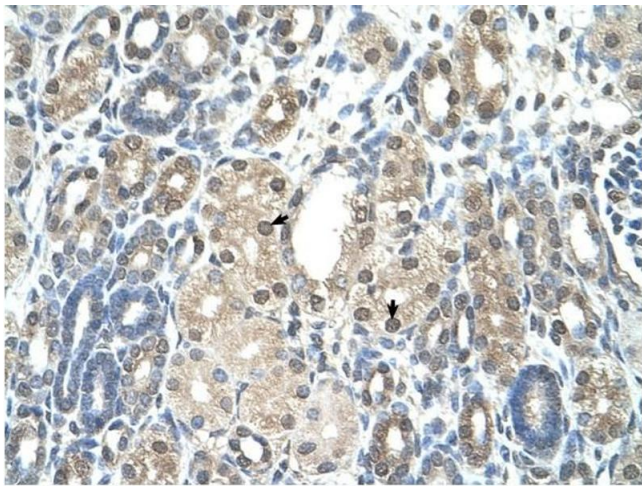
Concentration: Lot specific

Buffer: PBS

Handling Advice: Avoid repeated freeze/thaw cycles.
Dilute only prior to immediate use.

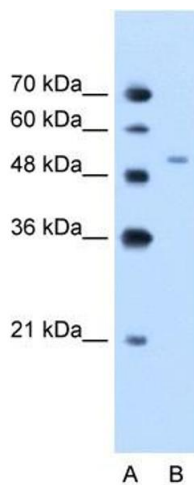
Storage: 4 °C/-20 °C

Storage Comment: Store at 2-8 °C for short periods. For longer periods of storage, store at -20 °C.



Immunohistochemistry

Image 1. PBEF1 antibody was used for immunohistochemistry at a concentration of 4-8 ug/ml to stain Epithelial cells of renal tubule (arrows) in Human Kidney. Magnification is at 400X



Western Blotting

Image 2. PBEF1 antibody used at 1.25 ug/ml to detect target protein.