

Datasheet for ABIN629602 **anti-eEF1A1 antibody (C-Term)**



[Go to Product page](#)

1 Image

Overview

Quantity:	100 µg
Target:	eEF1A1 (EEF1A1)
Binding Specificity:	C-Term
Reactivity:	Human, Mouse, Rat
Host:	Rabbit
Clonality:	Polyclonal
Conjugate:	This eEF1A1 antibody is un-conjugated
Application:	Western Blotting (WB)

Product Details

Immunogen:	EEF1 A1 antibody was raised using the C terminal of EEF1 1 corresponding to a region with amino acids IVDMVPGKPMCVESFSDYPPLGRFAVRDMRQTVAVGVKAVDKKAAGAGK
Specificity:	EEF1 A1 antibody was raised against the C terminal of EEF1 1
Purification:	Purified

Target Details

Target:	eEF1A1 (EEF1A1)
Alternative Name:	EEF1A1 (EEF1A1 Products)
Background:	EEF1A1 is an isoform of the alpha subunit of the elongation factor-1 complex, which is responsible for the enzymatic delivery of aminoacyl tRNAs to the ribosome. This isoform (alpha 1) is expressed in brain, placenta, lung, liver, kidney, and pancreas, and the other isoform (alpha

Target Details

2) is expressed in brain, heart and skeletal muscle. This isoform is identified as an autoantigen in 66% of patients with Felty syndrome.

Molecular Weight: 50 kDa (MW of target protein)

Application Details

Application Notes: WB: 2.5 µg/mL
Optimal conditions should be determined by the investigator.

Comment: EEF1A1 Blocking Peptide, catalog no. 33R-4196, is also available for use as a blocking control in assays to test for specificity of this EEF1A1 antibody

Restrictions: For Research Use only

Handling

Format: Lyophilized

Reconstitution: Lyophilized powder. Add distilled water for a 1 mg/mL concentration of EEF0 1 antibody in PBS

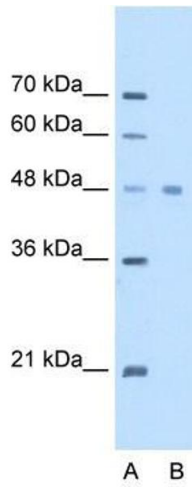
Concentration: Lot specific

Buffer: PBS

Handling Advice: Avoid repeated freeze/thaw cycles.
Dilute only prior to immediate use.

Storage: 4 °C/-20 °C

Storage Comment: Store at 2-8 °C for short periods. For longer periods of storage, store at -20 °C.



Western Blotting

Image 1. EEF1A1 antibody used at 2.5 ug/ml to detect target protein.