

Datasheet for ABIN629605 **anti-PRMT5 antibody (N-Term)**

3 Images



[Go to Product page](#)

Overview

Quantity:	100 µg
Target:	PRMT5
Binding Specificity:	N-Term
Reactivity:	Human, Mouse, Rat, Dog
Host:	Rabbit
Clonality:	Polyclonal
Conjugate:	This PRMT5 antibody is un-conjugated
Application:	Western Blotting (WB), Immunohistochemistry (IHC)

Product Details

Immunogen:	PRMT5 antibody was raised using the N terminal of PRMT5 corresponding to a region with amino acids FDFLCMPVFHPRFKREFIQEPAKNRPGPQTRSDLLLSGRDWNLTIVGKLS
Specificity:	PRMT5 antibody was raised against the N terminal of PRMT5
Purification:	Purified

Target Details

Target:	PRMT5
Alternative Name:	PRMT5 (PRMT5 Products)
Background:	PRMT5 methylates specific arginine residues in the small nuclear ribonucleoproteins Sm D1 and Sm D3 to monomethylarginine and to symmetrical dimethylarginines (sDMAs). It methylates SUPT5H. PRMT5 plays a role in the assembly of snRNP core particles and may play

Target Details

a role in cytokine-activated transduction pathways. It negatively regulates cyclin E1 promoter activity and cellular proliferation and May regulate the SUPT5H transcriptional elongation properties. It may be part of a pathway that is connected to a chloride current, possibly through cytoskeletal rearrangement. PRMT5 methylates histone H2A/H4 'Arg-3' during germ cell development and methylates histone H3 'Arg-8', which may repress transcription.

Molecular Weight: 68 kDa (MW of target protein)

Pathways: [Chromatin Binding](#), [Regulation of Muscle Cell Differentiation](#), [Ribonucleoprotein Complex Subunit Organization](#), [Skeletal Muscle Fiber Development](#)

Application Details

Application Notes: WB: 2.5 µg/mL, IHC: 4-8 µg/mL
Optimal conditions should be determined by the investigator.

Comment: PRMT5 Blocking Peptide, catalog no. 33R-2864, is also available for use as a blocking control in assays to test for specificity of this PRMT5 antibody

Restrictions: For Research Use only

Handling

Format: Lyophilized

Reconstitution: Lyophilized powder. Add distilled water for a 1 mg/mL concentration of PRMT5 antibody in PBS

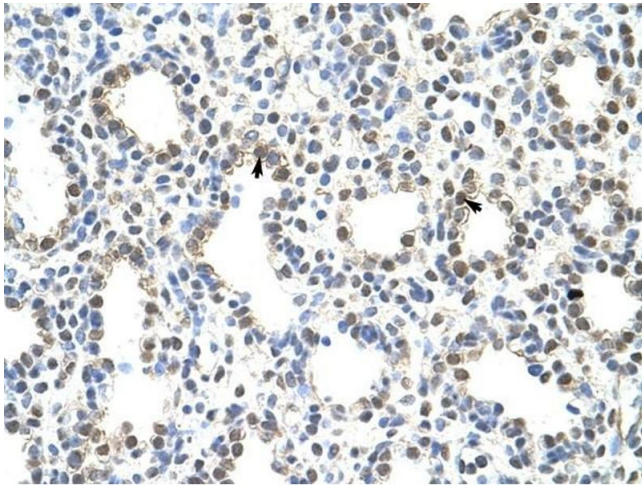
Concentration: Lot specific

Buffer: PBS

Handling Advice: Avoid repeated freeze/thaw cycles.
Dilute only prior to immediate use.

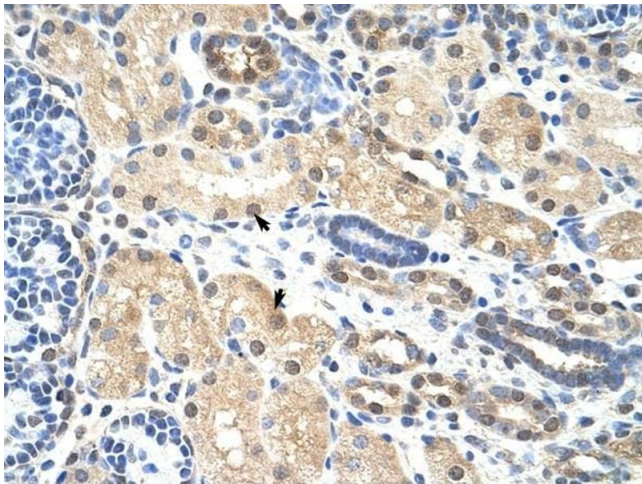
Storage: 4 °C/-20 °C

Storage Comment: Store at 2-8 °C for short periods. For longer periods of storage, store at -20 °C.



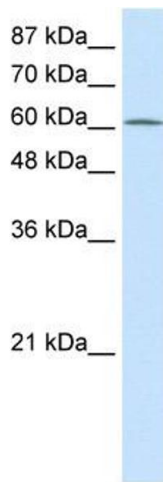
Immunohistochemistry

Image 1. PRMT5 antibody was used for immunohistochemistry at a concentration of 4-8 ug/ml to stain Alveolar cells (arrows) in Human Lung. Magnification is at 400X



Immunohistochemistry

Image 2. PRMT5 antibody was used for immunohistochemistry at a concentration of 4-8 ug/ml to stain Epithelial cells of renal tubule (arrows) in Human Kidney. Magnification is at 400X.



Western Blotting

Image 3. PRMT5 antibody used at 2.5 ug/ml to detect target protein.