

Datasheet for ABIN629606 **anti-BMP2K antibody (C-Term)**

3 Images



[Go to Product page](#)

Overview

Quantity:	100 µg
Target:	BMP2K
Binding Specificity:	C-Term
Reactivity:	Human, Dog
Host:	Rabbit
Clonality:	Polyclonal
Conjugate:	This BMP2K antibody is un-conjugated
Application:	Western Blotting (WB), Immunohistochemistry (IHC)

Product Details

Immunogen:	BMP2 K antibody was raised using the C terminal of BMP2 corresponding to a region with amino acids AQHQPSQQASPEYLTSPQEFSPALVSYTSSLPAQVGTIMDSSYSANRSV
Specificity:	BMP2 K antibody was raised against the C terminal of BMP2
Purification:	Purified

Target Details

Target:	BMP2K
Alternative Name:	BMP2K (BMP2K Products)
Background:	BMP2K is the human homolog of mouse BMP-2-inducible kinase. Bone morphogenic proteins (BMPs) play a key role in skeletal development and patterning. BMP2K is thought to be a protein kinase with a putative regulatory role in attenuating the program of osteoblast

Target Details

differentiation. This gene is the human homolog of mouse BMP-2-inducible kinase. Bone morphogenic proteins (BMPs) play a key role in skeletal development and patterning.

Molecular Weight: 74 kDa (MW of target protein)

Application Details

Application Notes: WB: 5 µg/mL, IHC: 4-8 µg/mL
Optimal conditions should be determined by the investigator.

Comment: BMP2K Blocking Peptide, catalog no. 33R-1448, is also available for use as a blocking control in assays to test for specificity of this BMP2K antibody

Restrictions: For Research Use only

Handling

Format: Lyophilized

Reconstitution: Lyophilized powder. Add distilled water for a 1 mg/mL concentration of BMP0 antibody in PBS

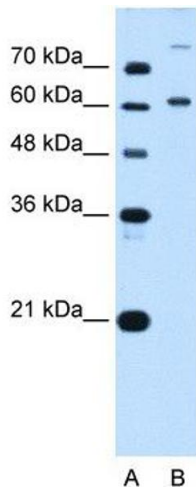
Concentration: Lot specific

Buffer: PBS

Handling Advice: Avoid repeated freeze/thaw cycles.
Dilute only prior to immediate use.

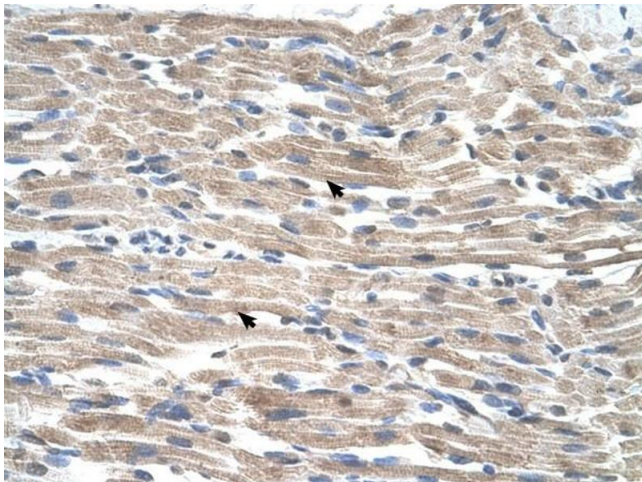
Storage: 4 °C/-20 °C

Storage Comment: Store at 2-8 °C for short periods. For longer periods of storage, store at -20 °C.



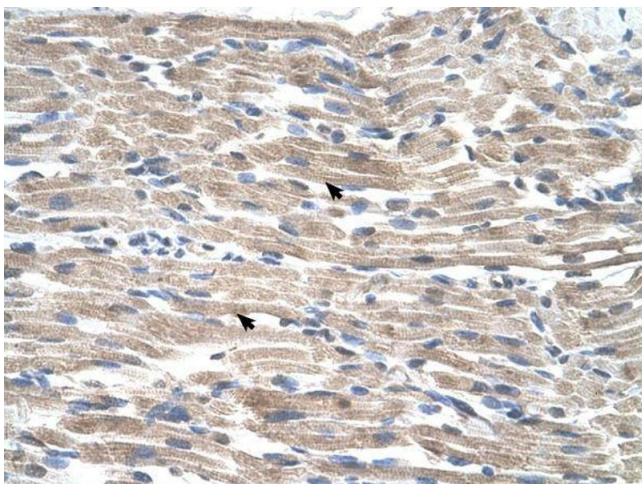
Western Blotting

Image 1. BMP2K antibody used at 5 ug/ml to detect target protein.



Immunohistochemistry

Image 2. BMP2K antibody was used for immunohistochemistry at a concentration of 4-8 ug/ml to stain Skeletal muscle cells (arrows) in Human Muscle. Magnification is at 400X



Immunohistochemistry

Image 3. BMP2K antibody was used for immunohistochemistry at a concentration of 4-8 ug/ml. Magnification is at 400X