

Datasheet for ABIN629607 anti-RAD23A antibody

2 Images



[Go to Product page](#)

Overview

Quantity:	100 µg
Target:	RAD23A
Reactivity:	Human, Mouse, Rat, Dog
Host:	Rabbit
Clonality:	Polyclonal
Conjugate:	This RAD23A antibody is un-conjugated
Application:	Western Blotting (WB), Immunohistochemistry (IHC)

Product Details

Immunogen:	RAD23 A antibody was raised using a synthetic peptide corresponding to a region with amino acids VPSSGSSGREEDAASTLVTGSEYETMLTEIMSMGYERERVVAALRASYN
Purification:	Purified

Target Details

Target:	RAD23A
Alternative Name:	RAD23A (RAD23A Products)
Background:	RAD23A is one of two human homologs of <i>Saccharomyces cerevisiae</i> Rad23, a protein involved in nucleotide excision repair (NER). This protein was shown to interact with, and elevate the nucleotide excision activity of 3-methyladenine-DNA glycosylase (MPG), which suggested a role in DNA damage recognition in base excision repair. This protein contains an N-terminal ubiquitin-like domain, which was reported to interact with 26S proteasome, as well

Target Details

as with ubiquitin protein ligase E6AP, and thus suggests that this protein may be involved in the ubiquitin mediated proteolytic pathway in cells.

Molecular Weight: 40 kDa (MW of target protein)

Pathways: [DNA Damage Repair](#)

Application Details

Application Notes: WB: 2.5 µg/mL, IHC: 4-8 µg/mL
Optimal conditions should be determined by the investigator.

Comment: RAD23A Blocking Peptide, catalog no. 33R-9737, is also available for use as a blocking control in assays to test for specificity of this RAD23A antibody

Restrictions: For Research Use only

Handling

Format: Lyophilized

Reconstitution: Lyophilized powder. Add distilled water for a 1 mg/mL concentration of RAD20 antibody in PBS

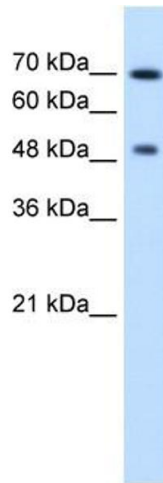
Concentration: Lot specific

Buffer: PBS

Handling Advice: Avoid repeated freeze/thaw cycles.

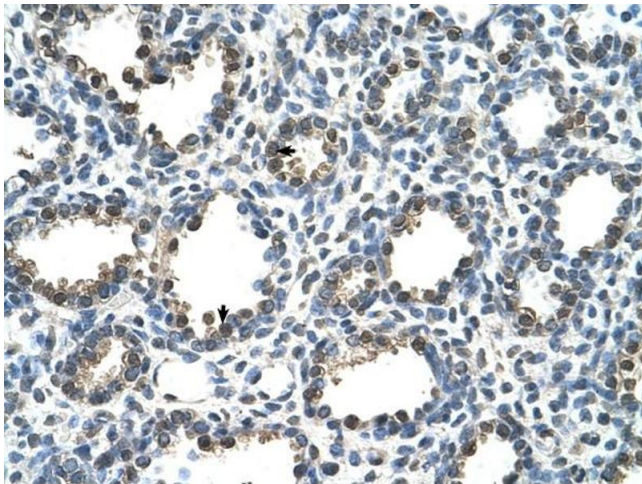
Storage: 4 °C/-20 °C

Storage Comment: Store at 2-8 °C for short periods. For longer periods of storage, store at -20 °C.



Western Blotting

Image 1. RAD23A antibody used at 2.5 ug/ml to detect target protein.



Immunohistochemistry

Image 2. RAD23A antibody was used for immunohistochemistry at a concentration of 4-8 ug/ml to stain Alveolar cells (arrows) in Human Lung. Magnification is at 400X