

## Datasheet for ABIN629608 **anti-CENPA antibody (N-Term)**

### 3 Images



[Go to Product page](#)

#### Overview

Quantity:	100 µg
Target:	CENPA
Binding Specificity:	N-Term
Reactivity:	Human
Host:	Rabbit
Clonality:	Polyclonal
Conjugate:	This CENPA antibody is un-conjugated
Application:	Western Blotting (WB), Immunohistochemistry (IHC)

#### Product Details

Immunogen:	CENPA antibody was raised using the N terminal of CENPA corresponding to a region with amino acids MGPRRRSRKPEAPRRRSPSTPTPGPSRRGPSLGASSHQHSRRRQGWLKE
Specificity:	CENPA antibody was raised against the N terminal of CENPA
Purification:	Purified

#### Target Details

Target:	CENPA
Alternative Name:	CENPA ( <a href="#">CENPA Products</a> )
Background:	Centromeres are the differentiated chromosomal domains that specify the mitotic behavior of chromosomes. CENPA is a centromere protein which contains a histone H3 related histone fold domain that is required for targeting to the centromere. CENPA is proposed to be a component

## Target Details

---

of a modified nucleosome or nucleosome-like structure in which it replaces 1 or both copies of conventional histone H3 in the (H3-H4)<sub>2</sub> tetrameric core of the nucleosome particle.

Molecular Weight: 16 kDa (MW of target protein)

Pathways: [Chromatin Binding](#), [Maintenance of Protein Location](#)

## Application Details

---

Application Notes: WB: 1.25 µg/mL, IHC: 4-8 µg/mL  
Optimal conditions should be determined by the investigator.

Comment: CENPA Blocking Peptide, catalog no. 33R-6060, is also available for use as a blocking control in assays to test for specificity of this CENPA antibody

Restrictions: For Research Use only

## Handling

---

Format: Lyophilized

Reconstitution: Lyophilized powder. Add distilled water for a 1 mg/mL concentration of CENPA antibody in PBS

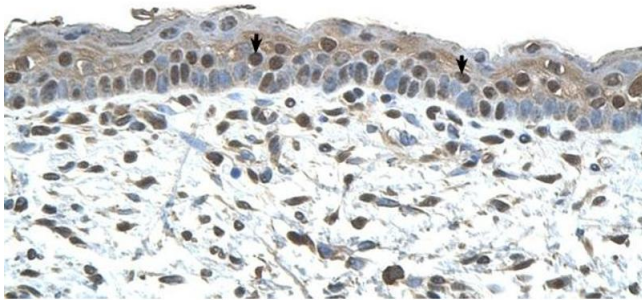
Concentration: Lot specific

Buffer: PBS

Handling Advice: Avoid repeated freeze/thaw cycles.  
Dilute only prior to immediate use.

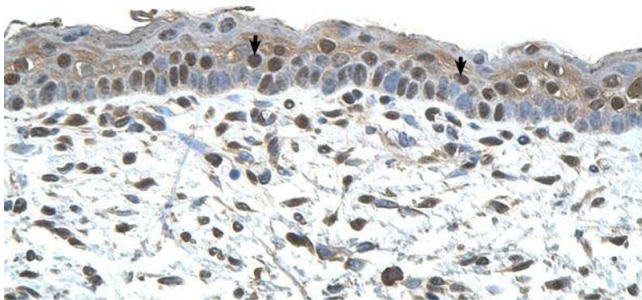
Storage: 4 °C/-20 °C

Storage Comment: Store at 2-8 °C for short periods. For longer periods of storage, store at -20 °C.



#### Immunohistochemistry

**Image 1.** CENPA antibody was used for immunohistochemistry at a concentration of 4-8 ug/ml to stain Squamous epithelial cells (arrows) in Human Skin. Magnification is at 400X



#### Immunohistochemistry

**Image 2.** CENPA antibody was used for immunohistochemistry at a concentration of 4-8 ug/ml. Magnification is at 400X



#### Western Blotting

**Image 3.** CENPA antibody used at 1.25 ug/ml to detect target protein.