

Datasheet for ABIN629609
anti-PEBP1 antibody (C-Term)



[Go to Product page](#)

1 Image

Overview

Quantity:	100 µg
Target:	PEBP1
Binding Specificity:	C-Term
Reactivity:	Human, Mouse
Host:	Rabbit
Clonality:	Polyclonal
Conjugate:	This PEBP1 antibody is un-conjugated
Application:	Western Blotting (WB)

Product Details

Immunogen:	PEBP1 antibody was raised using the C terminal of PEBP1 corresponding to a region with amino acids LSNRSGDHRGKFKVASFRKKYELRAPVAGTCYQAEWDDYVPKLYEQLSGK
Specificity:	PEBP1 antibody was raised against the C terminal of PEBP1
Purification:	Purified

Target Details

Target:	PEBP1
Alternative Name:	PEBP1 (PEBP1 Products)
Background:	PEBP1 binds ATP, opioids and phosphatidylethanolamine. It has lower affinity for phosphatidylinositol and phosphatidylcholine. It is also a serine protease inhibitor which inhibits thrombin, neuropsin and chymotrypsin but not trypsin, tissue type plasminogen activator and

Target Details

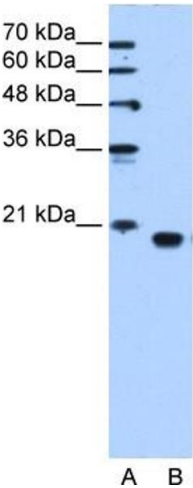
	elastase.
Molecular Weight:	21 kDa (MW of target protein)
Pathways:	Feeding Behaviour

Application Details

Application Notes:	WB: 1.25 µg/mL Optimal conditions should be determined by the investigator.
Comment:	PEBP1 Blocking Peptide, catalog no. 33R-5442, is also available for use as a blocking control in assays to test for specificity of this PEBP1 antibody
Restrictions:	For Research Use only

Handling

Format:	Lyophilized
Reconstitution:	Lyophilized powder. Add distilled water for a 1 mg/mL concentration of PEBP1 antibody in PBS
Concentration:	Lot specific
Buffer:	PBS
Handling Advice:	Avoid repeated freeze/thaw cycles. Dilute only prior to immediate use.
Storage:	4 °C/-20 °C
Storage Comment:	Store at 2-8 °C for short periods. For longer periods of storage, store at -20 °C.



Western Blotting

Image 1. PEBP1 antibody used at 1.25 ug/ml to detect target protein.