

## Datasheet for ABIN629613 **anti-PEX3 antibody (N-Term)**

### 3 Images



[Go to Product page](#)

### Overview

Quantity:	100 µg
Target:	PEX3
Binding Specificity:	N-Term
Reactivity:	Human, Mouse, Rat, Dog
Host:	Rabbit
Clonality:	Polyclonal
Conjugate:	This PEX3 antibody is un-conjugated
Application:	Western Blotting (WB), Immunohistochemistry (IHC)

### Product Details

Immunogen:	PEX3 antibody was raised using the N terminal of PEX3 corresponding to a region with amino acids KYGQKKIREIQEREA AEYIAQARRQYHFESNQRTC NMTVLSMLPTLREAL
Specificity:	PEX3 antibody was raised against the N terminal of PEX3
Purification:	Purified

### Target Details

Target:	PEX3
Alternative Name:	PEX3 ( <a href="#">PEX3 Products</a> )
Background:	PEX3 is involved in peroxisome biosynthesis and integrity. It assembles membrane vesicles before the matrix proteins are translocated. As a docking factor for PEX19, it is necessary for the import of peroxisomal membrane proteins in the peroxisomes.

## Target Details

---

Molecular Weight: 42 kDa (MW of target protein)

## Application Details

---

Application Notes: WB: 5 µg/mL, IHC: 4-8 µg/mL  
Optimal conditions should be determined by the investigator.

Comment: PEX3 Blocking Peptide, catalog no. 33R-4740, is also available for use as a blocking control in assays to test for specificity of this PEX3 antibody

Restrictions: For Research Use only

## Handling

---

Format: Lyophilized

Reconstitution: Lyophilized powder. Add distilled water for a 1 mg/mL concentration of PEX3 antibody in PBS

Concentration: Lot specific

Buffer: PBS

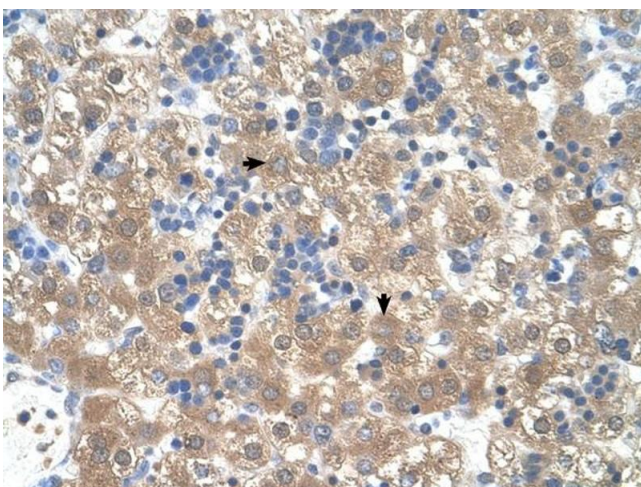
Handling Advice: Avoid repeated freeze/thaw cycles.  
Dilute only prior to immediate use.

Storage: 4 °C/-20 °C

Storage Comment: Store at 2-8 °C for short periods. For longer periods of storage, store at -20 °C.

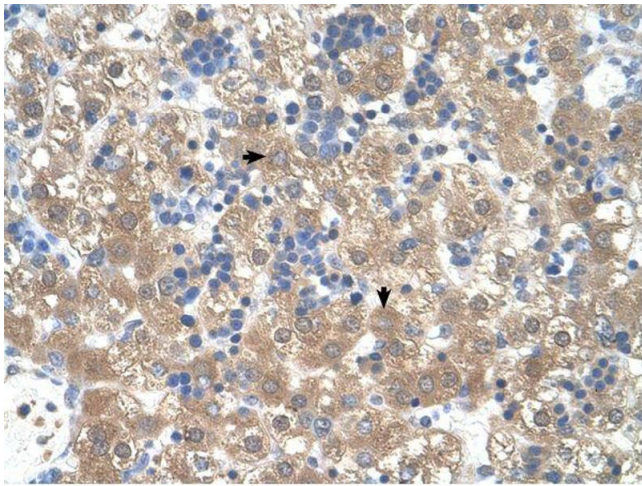
## Images

---



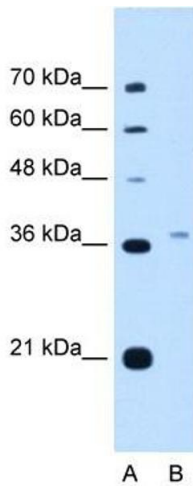
### Immunohistochemistry

**Image 1.** PEX3 antibody was used for immunohistochemistry at a concentration of 4-8 ug/ml to stain Hepatocytes (arrows) in Human Liver. Magnification is at 400X



### Immunohistochemistry

**Image 2.** PEX3 antibody was used for immunohistochemistry at a concentration of 4-8 ug/ml. Magnification is at 400X



### Western Blotting

**Image 3.** PEX3 antibody used at 5 ug/ml to detect target protein.