

Datasheet for ABIN629618 **anti-ANKRD11 antibody (N-Term)**

2 Images



[Go to Product page](#)

Overview

Quantity:	100 µg
Target:	ANKRD11
Binding Specificity:	N-Term
Reactivity:	Human, Mouse, Rat, Dog
Host:	Rabbit
Clonality:	Polyclonal
Conjugate:	This ANKRD11 antibody is un-conjugated
Application:	Western Blotting (WB), Immunohistochemistry (IHC)

Product Details

Immunogen:	ANKRD11 antibody was raised using the N terminal of ANKRD11 corresponding to a region with amino acids KRKLPFTAGANGEQKSDTEKQGPERRKRIKKEPVTRKAGLLFGMGLSGIR
Specificity:	ANKRD11 antibody was raised against the N terminal of ANKRD11
Purification:	Purified

Target Details

Target:	ANKRD11
Alternative Name:	ANKRD11 (ANKRD11 Products)
Background:	ANKRD11 is a member of a novel family of ankyrin repeats containing cofactors (ANCOs) that interact with p160 coactivators to inhibit ligand-dependent transactivation. ANKRD11 encodes a large nuclear protein with five ankyrin repeats, and parts of its sequences have been reported

Target Details

as nasopharyngeal carcinoma susceptibility protein and medulloblastoma antigen. This gene also colocalizes and interacts with histone deacetylases.

Molecular Weight: 298 kDa (MW of target protein)

Application Details

Application Notes: WB: 1.25 µg/mL, IHC: 4-8 µg/mL
Optimal conditions should be determined by the investigator.

Comment: ANKRD11 Blocking Peptide, catalog no. 33R-4627, is also available for use as a blocking control in assays to test for specificity of this ANKRD11 antibody

Restrictions: For Research Use only

Handling

Format: Lyophilized

Reconstitution: Lyophilized powder. Add distilled water for a 1 mg/mL concentration of ANKRD11 antibody in PBS

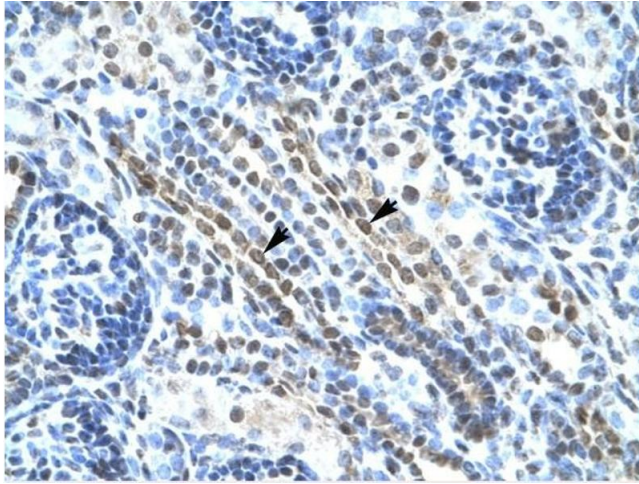
Concentration: Lot specific

Buffer: PBS

Handling Advice: Avoid repeated freeze/thaw cycles.
Dilute only prior to immediate use.

Storage: 4 °C/-20 °C

Storage Comment: Store at 2-8 °C for short periods. For longer periods of storage, store at -20 °C.



Immunohistochemistry

Image 1. ANKRD11 antibody was used for immunohistochemistry at a concentration of 4-8 ug/ml to stain Epithelial cells of renal tubule (arrows) in Human Kidney. Magnification is at 400X



Western Blotting

Image 2. ANKRD11 antibody used at 1.25 ug/ml to detect target protein.