

## Datasheet for ABIN629622 **anti-PRP19 antibody**

### 2 Images



[Go to Product page](#)

### Overview

Quantity:	100 µg
Target:	PRP19 (PRPF19)
Reactivity:	Human, Mouse, Rat, Dog, Zebrafish (Danio rerio)
Host:	Rabbit
Clonality:	Polyclonal
Conjugate:	This PRP19 antibody is un-conjugated
Application:	Western Blotting (WB), Immunohistochemistry (IHC)

### Product Details

Immunogen:	PRPF19 antibody was raised using a synthetic peptide corresponding to a region with amino acids PSVVGAGEPMDLGELVGMTPEIIQKLQDKATVLTTERKKRGKTVPEELVK
Purification:	Purified

### Target Details

Target:	PRP19 (PRPF19)
Alternative Name:	PRPF19 ( <a href="#">PRPF19 Products</a> )
Background:	PRPF19 plays a role in DNA double-strand break (DSB) repair and pre-mRNA splicing reaction. It binds double-stranded DNA in a sequence-nonspecific manner. PRPF19 acts as a structural component of the nuclear framework. It may also serve as a support for spliceosome binding and activity. It is essential for spliceosome assembly in a oligomerization-dependent manner and might also be important for spliceosome stability. It also may have E3 ubiquitin ligase

## Target Details

---

activity.

Molecular Weight: 55 kDa (MW of target protein)

Pathways: [Ribonucleoprotein Complex Subunit Organization](#)

## Application Details

---

Application Notes: WB: 2.5 µg/mL, IHC: 4-8 µg/mL  
Optimal conditions should be determined by the investigator.

Comment: PRPF19 Blocking Peptide, catalog no. 33R-7381, is also available for use as a blocking control in assays to test for specificity of this PRPF19 antibody

Restrictions: For Research Use only

## Handling

---

Format: Lyophilized

Reconstitution: Lyophilized powder. Add distilled water for a 1 mg/mL concentration of PRPF19 antibody in PBS

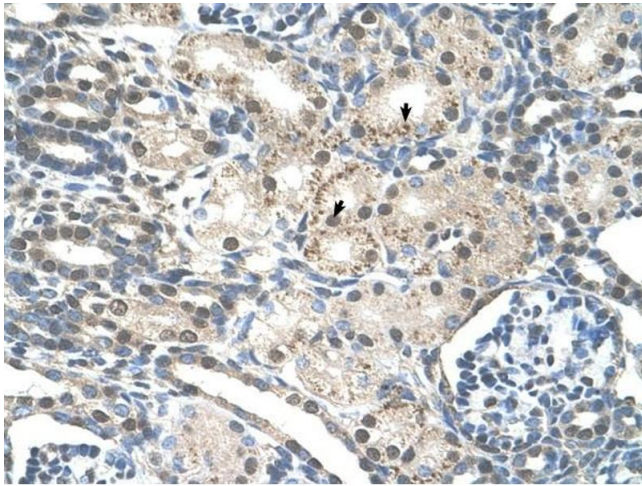
Concentration: Lot specific

Buffer: PBS

Handling Advice: Avoid repeated freeze/thaw cycles.

Storage: 4 °C/-20 °C

Storage Comment: Store at 2-8 °C for short periods. For longer periods of storage, store at -20 °C.



### Immunohistochemistry

**Image 1.** PRPF19 antibody was used for immunohistochemistry at a concentration of 4-8 ug/ml to stain Epithelial cells of renal tubule (arrows) in Human Kidney. Magnification is at 400X



### Western Blotting

**Image 2.** PRPF19 antibody used at 2.5 ug/ml to detect target protein.