

Datasheet for ABIN629626

**anti-Deoxyuridine Triphosphatase (DUT) (C-Term) antibody**[Go to Product page](#)**3** Images

## Overview

Quantity:	100 µg
Target:	Deoxyuridine Triphosphatase (DUT)
Binding Specificity:	C-Term
Reactivity:	Human, Rat, Mouse, Dog
Host:	Rabbit
Clonality:	Polyclonal
Conjugate:	Un-conjugated
Application:	Western Blotting (WB), Immunohistochemistry (IHC)

## Product Details

Immunogen:	DUT antibody was raised using the C terminal of DUT corresponding to a region with amino acids NFGKEKFEVKKGDRIAQLICERIFYPEIEEVQALDDTERGSGGFGSTGKN
Specificity:	DUT antibody was raised against the C terminal of DUT
Purification:	Purified

## Target Details

Target:	Deoxyuridine Triphosphatase (DUT)
Alternative Name:	DUT ( <a href="#">DUT Products</a> )
Target Type:	Viral Protein
Background:	DUT is an essential enzyme of nucleotide metabolism. This protein forms a ubiquitous,

## Target Details

---

homotetrameric enzyme that hydrolyzes dUTP to dUMP and pyrophosphate. This reaction serves two cellular purposes: providing a precursor (dUMP) for the synthesis of thymine nucleotides needed for DNA replication, and limiting intracellular pools of dUTP. Elevated levels of dUTP lead to increased incorporation of uracil into DNA, which induces extensive excision repair mediated by uracil glycosylase. This repair process, resulting in the removal and reincorporation of dUTP, is self-defeating and leads to DNA fragmentation and cell death.

Molecular Weight: 19 kDa (MW of target protein)

## Application Details

---

Application Notes: WB: 2.5 µg/mL, IHC: 4-8 µg/mL  
Optimal conditions should be determined by the investigator.

Comment: DUT Blocking Peptide, catalog no. 33R-6682, is also available for use as a blocking control in assays to test for specificity of this DUT antibody

Restrictions: For Research Use only

## Handling

---

Format: Lyophilized

Reconstitution: Lyophilized powder. Add distilled water for a 1 mg/mL concentration of DUT antibody in PBS

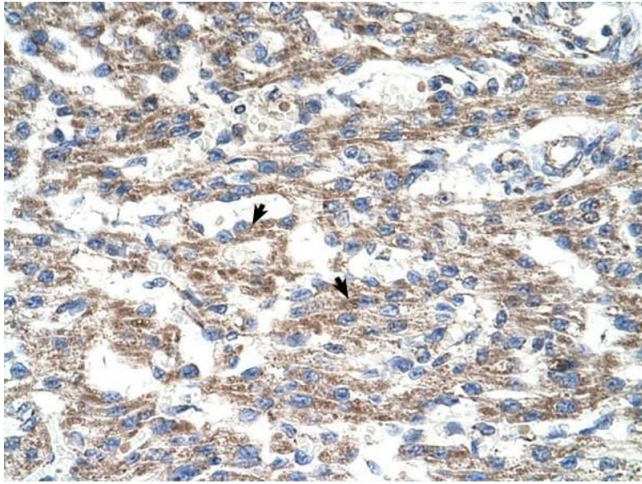
Concentration: Lot specific

Buffer: PBS

Handling Advice: Avoid repeated freeze/thaw cycles.  
Dilute only prior to immediate use.

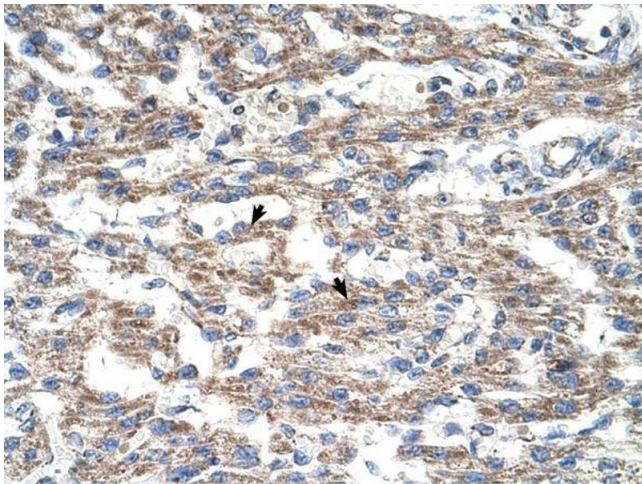
Storage: 4 °C/-20 °C

Storage Comment: Store at 2-8 °C for short periods. For longer periods of storage, store at -20 °C.



### Immunohistochemistry

**Image 1.** DUT antibody was used for immunohistochemistry at a concentration of 4-8 ug/ml to stain Myocardial cells (arrows) in Human Heart. Magnification is at 400X



### Immunohistochemistry

**Image 2.** DUT antibody was used for immunohistochemistry at a concentration of 4-8 ug/ml. Magnification is at 400X



### Western Blotting

**Image 3.** DUT antibody used at 2.5 ug/ml to detect target protein.