

Datasheet for ABIN629627

## anti-Cnpase antibody (N-Term)



[Go to Product page](#)

### 1 Image

#### Overview

Quantity:	100 µg
Target:	Cnpase (CNP)
Binding Specificity:	N-Term
Reactivity:	Human
Host:	Rabbit
Clonality:	Polyclonal
Conjugate:	This Cnpase antibody is un-conjugated
Application:	Western Blotting (WB)

#### Product Details

Immunogen:	CNP antibody was raised using the N terminal of CNP corresponding to a region with amino acids YKITPGARGAFSEELYKRLDEDLAAYCRRRDIRILVLDDTNHERERLEQLF
Specificity:	CNP antibody was raised against the N terminal of CNP
Purification:	Purified

#### Target Details

Target:	Cnpase (CNP)
Alternative Name:	CNP ( <a href="#">CNP Products</a> )
Background:	2',3'-Cyclic nucleotide-3'-phosphodiesterase (CNP1 and CNP2) is the major enzyme of central nervous system myelin. It is associated with oligodendroglial plasma membrane and uncompact myelin (myelin-like fraction), which are in contact with glial cytoplasm.

Target Details

Molecular Weight: 45 kDa (MW of target protein)

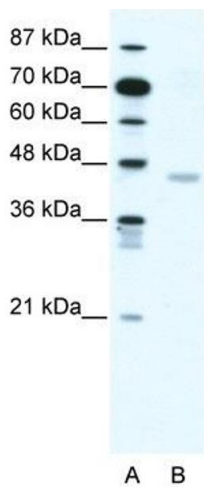
Application Details

Application Notes:	WB: 1.25 µg/mL Optimal conditions should be determined by the investigator.
Comment:	CNP Blocking Peptide, catalog no. 33R-10149, is also available for use as a blocking control in assays to test for specificity of this CNP antibody
Restrictions:	For Research Use only

Handling

Format:	Lyophilized
Reconstitution:	Lyophilized powder. Add distilled water for a 1 mg/mL concentration of CNP antibody in PBS
Concentration:	Lot specific
Buffer:	PBS
Handling Advice:	Avoid repeated freeze/thaw cycles. Dilute only prior to immediate use.
Storage:	4 °C/-20 °C
Storage Comment:	Store at 2-8 °C for short periods. For longer periods of storage, store at -20 °C.

Images



**Western Blotting**

**Image 1.** CNP antibody used at 1.25 ug/ml to detect target protein.