

Datasheet for ABIN629630 **anti-RNF40 antibody (C-Term)**

2 Images



[Go to Product page](#)

Overview

Quantity:	100 µg
Target:	RNF40
Binding Specificity:	C-Term
Reactivity:	Human, Mouse, Rat, Dog
Host:	Rabbit
Clonality:	Polyclonal
Conjugate:	This RNF40 antibody is un-conjugated
Application:	Western Blotting (WB), Immunohistochemistry (IHC)

Product Details

Immunogen:	RNF40 antibody was raised using the C terminal of RNF40 corresponding to a region with amino acids KLLREEKDELGEQVLGLKSQVDAQLLTVQKLEEKERALQGSLGGVEKELT
Specificity:	RNF40 antibody was raised against the C terminal of RNF40
Purification:	Purified

Target Details

Target:	RNF40
Alternative Name:	RNF40 (RNF40 Products)
Background:	RNF40 contains a RING finger, a motif known to be involved in protein-protein and protein-DNA interactions. This protein was reported to interact with the tumor suppressor protein RB1. Studies of the rat counterpart suggested that this protein may function as an E3 ubiquitin-

Target Details

protein ligase, and facilitate the ubiquitination and degradation of syntaxin 1, which is an essential component of the neurotransmitter release machinery.

Molecular Weight: 114 kDa (MW of target protein)

Application Details

Application Notes: WB: 1.25 µg/mL, IHC: 4-8 µg/mL
Optimal conditions should be determined by the investigator.

Comment: RNF40 Blocking Peptide, catalog no. 33R-4520, is also available for use as a blocking control in assays to test for specificity of this RNF40 antibody

Restrictions: For Research Use only

Handling

Format: Lyophilized

Reconstitution: Lyophilized powder. Add distilled water for a 1 mg/mL concentration of RNF40 antibody in PBS

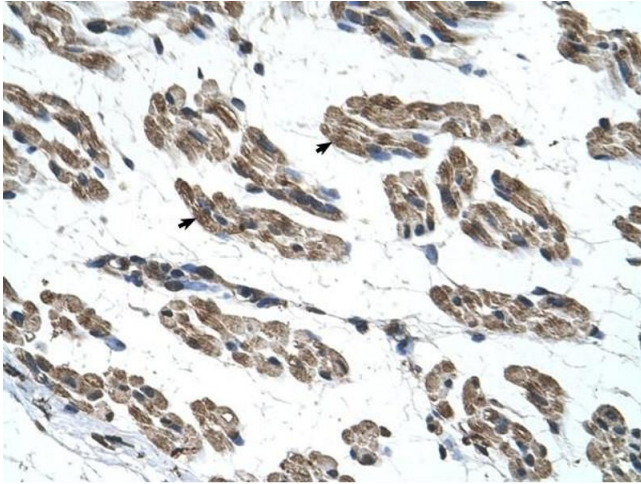
Concentration: Lot specific

Buffer: PBS

Handling Advice: Avoid repeated freeze/thaw cycles.
Dilute only prior to immediate use.

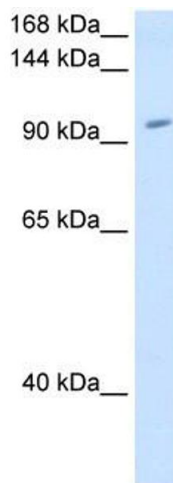
Storage: 4 °C/-20 °C

Storage Comment: Store at 2-8 °C for short periods. For longer periods of storage, store at -20 °C.



Immunohistochemistry

Image 1. RNF40 antibody was used for immunohistochemistry at a concentration of 4-8 ug/ml to stain Skeletal muscle cells (arrows) in Human Muscle. Magnification is at 400X



Western Blotting

Image 2. RNF40 antibody used at 1.25 ug/ml to detect target protein.