

## Datasheet for ABIN629636 **anti-WDR12 antibody (C-Term)**



[Go to Product page](#)

### 1 Image

#### Overview

Quantity:	100 µg
Target:	WDR12
Binding Specificity:	C-Term
Reactivity:	Human, Mouse, Rat, Dog
Host:	Rabbit
Clonality:	Polyclonal
Conjugate:	This WDR12 antibody is un-conjugated
Application:	Western Blotting (WB)

#### Product Details

Immunogen:	WDR12 antibody was raised using the C terminal of WDR12 corresponding to a region with amino acids DTRSCKAPLYDLAAHEDKVLSDWTDGTTTTGGADNKLYSYRYSPTTSH
Specificity:	WDR12 antibody was raised against the C terminal of WDR12
Purification:	Purified

#### Target Details

Target:	WDR12
Alternative Name:	WDR12 ( <a href="#">WDR12 Products</a> )
Background:	WDR12 is a member of the WD repeat protein family. WD repeats are minimally conserved regions of approximately 40 amino acids typically bracketed by gly-his and trp-asp (GH-WD), which may facilitate formation of heterotrimeric or multiprotein complexes. Members of this

## Target Details

---

family are involved in a variety of cellular processes, including cell cycle progression, signal transduction, apoptosis, and gene regulation. The function of this protein is not known.

Molecular Weight: 47 kDa (MW of target protein)

## Application Details

---

Application Notes: WB: 5 µg/mL  
Optimal conditions should be determined by the investigator.

Comment: WDR12 Blocking Peptide, catalog no. 33R-2209, is also available for use as a blocking control in assays to test for specificity of this WDR12 antibody

Restrictions: For Research Use only

## Handling

---

Format: Lyophilized

Reconstitution: Lyophilized powder. Add distilled water for a 1 mg/mL concentration of WDR12 antibody in PBS

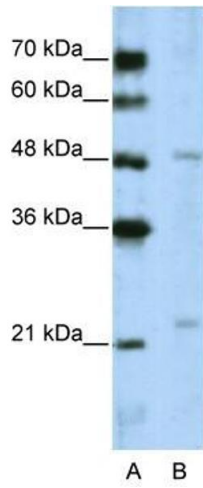
Concentration: Lot specific

Buffer: PBS

Handling Advice: Avoid repeated freeze/thaw cycles.  
Dilute only prior to immediate use.

Storage: 4 °C/-20 °C

Storage Comment: Store at 2-8 °C for short periods. For longer periods of storage, store at -20 °C.



### Western Blotting

**Image 1.** WDR12 antibody used at 5 ug/ml to detect target protein.