

Datasheet for ABIN629641
anti-ACTN2 antibody (C-Term)



[Go to Product page](#)

2 Images

1 Publication

Overview

Quantity:	100 µg
Target:	ACTN2
Binding Specificity:	C-Term
Reactivity:	Human, Mouse, Rat, Dog
Host:	Rabbit
Clonality:	Polyclonal
Conjugate:	This ACTN2 antibody is un-conjugated
Application:	Western Blotting (WB), Immunohistochemistry (IHC)

Product Details

Immunogen:	alpha Actinin 2 antibody was raised using the C terminal of ACTN2 corresponding to a region with amino acids VIASFRLASDKPYILAEELRRELPDQAQYCIKRMPAYSGPGSVPGALD
Specificity:	Alpha Actinin 2 antibody was raised against the C terminal of ACTN2
Purification:	Purified

Target Details

Target:	ACTN2
Alternative Name:	alpha Actinin 2 (ACTN2 Products)
Background:	The alpha-actinins are a multigene family of four actin-binding proteins related to dystrophin. The two skeletal muscle isoforms of alpha-actinin (ACTN2 and ACTN3) are major structural components of the Z-line involved in anchoring the actin-containing thin filaments. In humans,

Target Details

ACTN2 is expressed in all muscle fibres, while ACTN3 expression is restricted to a subset of type 2 fibres. Murine Actn2 and Actn3 are differentially expressed, spatially and temporally, during embryonic development and, in contrast to humans, alpha-actinin-2 expression does not completely overlap alpha-actinin-3 in postnatal skeletal muscle, suggesting independent function.

Molecular Weight: 98 kDa (MW of target protein)

Pathways: [Cell-Cell Junction Organization](#), [Skeletal Muscle Fiber Development](#), [Negative Regulation of Transporter Activity](#)

Application Details

Application Notes: WB: 1.25 µg/mL, IHC: 4-8 µg/mL
Optimal conditions should be determined by the investigator.

Comment: Alpha Actinin 2 Blocking Peptide, catalog no. 33R-9587, is also available for use as a blocking control in assays to test for specificity of this Alpha Actinin 2 antibody

Restrictions: For Research Use only

Handling

Format: Lyophilized

Reconstitution: Lyophilized powder. Add distilled water for a 1 mg/mL concentration of ACTN2 antibody in PBS

Concentration: Lot specific

Buffer: PBS

Handling Advice: Avoid repeated freeze/thaw cycles.
Dilute only prior to immediate use.

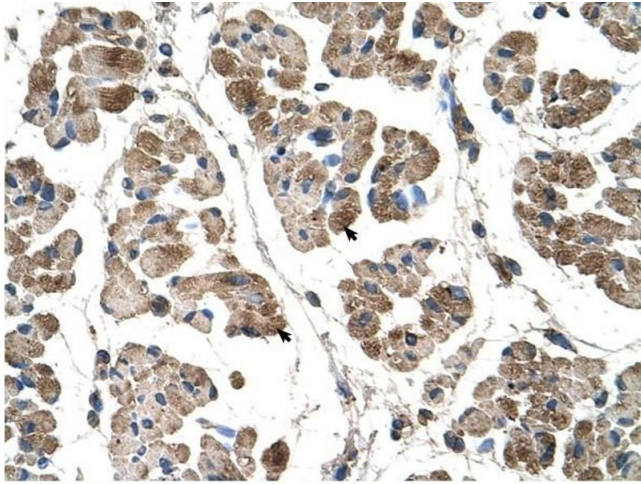
Storage: 4 °C/-20 °C

Storage Comment: Store at 2-8 °C for short periods. For longer periods of storage, store at -20 °C.

Publications

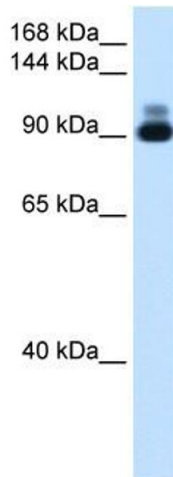
Product cited in: Chopra, Kutys, Zhang, Polacheck, Sheng, Luu, Eyckmans, Hinson, Seidman, Seidman, Chen: "Force Generation via β -Cardiac Myosin, Titin, and α -Actinin Drives Cardiac Sarcomere Assembly from Cell-Matrix Adhesions." in: **Developmental cell**, Vol. 44, Issue 1, pp. 87-96.e5, (2018) ([PubMed](#)).

Images



Immunohistochemistry

Image 1. Alpha Actinin 2 antibody was used for immunohistochemistry at a concentration of 4-8 ug/ml to stain Skeletal muscle cells (arrows) in Human Muscle. Magnification is at 400X



Western Blotting

Image 2. Alpha Actinin 2 antibody used at 1.25 ug/ml to detect target protein.