

Datasheet for ABIN629646  
**anti-Tropomyosin antibody**



[Go to Product page](#)

2 Images

## Overview

Quantity:	100 µg
Target:	Tropomyosin (TPM1)
Reactivity:	Human, Rat, Mouse, Zebrafish (Danio rerio), Dog
Host:	Rabbit
Clonality:	Polyclonal
Conjugate:	This Tropomyosin antibody is un-conjugated
Application:	Western Blotting (WB), Immunohistochemistry (IHC)

## Product Details

Immunogen:	Tropomyosin 1 antibody was raised using a synthetic peptide corresponding to a region with amino acids DRAEQAEADKKAEDRSKQLEDELVSLQKCLKGTEDELDKYSEALKDAQE
Purification:	Purified

## Target Details

Target:	Tropomyosin (TPM1)
Alternative Name:	Tropomyosin 1 ( <a href="#">TPM1 Products</a> )
Background:	TPM1 is a member of the tropomyosin family of highly conserved, widely distributed actin-binding proteins involved in the contractile system of striated and smooth muscles and the cytoskeleton of non-muscle cells. Tropomyosin is composed of two alpha-helical chains arranged as a coiled-coil. It is polymerized end to end along the two grooves of actin filaments and provides stability to the filaments. The protein is one type of alpha helical chain that forms

## Target Details

---

the predominant tropomyosin of striated muscle, where it also functions in association with the troponin complex to regulate the calcium-dependent interaction of actin and myosin during muscle contraction.

Molecular Weight: 31 kDa (MW of target protein)

Pathways: [Regulation of Actin Filament Polymerization](#)

## Application Details

---

Application Notes: WB: 1.25 µg/mL, IHC: 4-8 µg/mL  
Optimal conditions should be determined by the investigator.

Comment: Tropomyosin 1 Blocking Peptide, catalog no. 33R-2137, is also available for use as a blocking control in assays to test for specificity of this Tropomyosin 1 antibody

Restrictions: For Research Use only

## Handling

---

Format: Lyophilized

Reconstitution: Lyophilized powder. Add distilled water for a 1 mg/mL concentration of TPM1 antibody in PBS

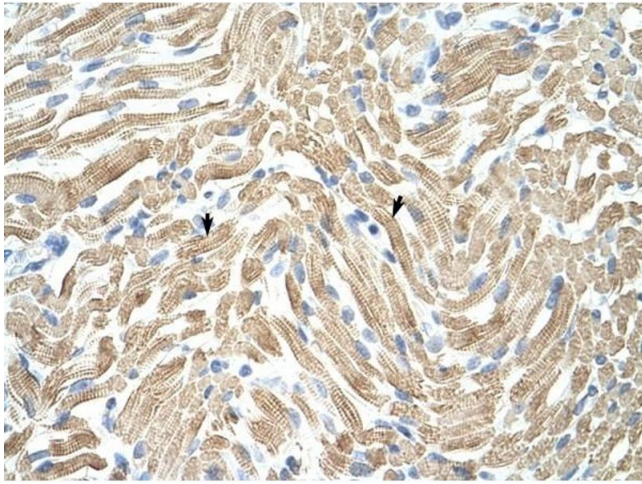
Concentration: Lot specific

Buffer: PBS

Handling Advice: Avoid repeated freeze/thaw cycles.

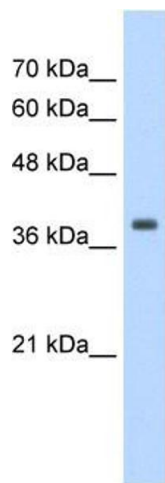
Storage: 4 °C/-20 °C

Storage Comment: Store at 2-8 °C for short periods. For longer periods of storage, store at -20 °C.



### Immunohistochemistry

**Image 1.** Tropomyosin 1 antibody was used for immunohistochemistry at a concentration of 4-8 ug/ml to stain Skeletal muscle cells (arrows) in Human Muscle. Magnification is at 400X



### Western Blotting

**Image 2.** Tropomyosin 1 antibody used at 1.25 ug/ml to detect target protein.