

Datasheet for ABIN629648
anti-PCMTD1 antibody



[Go to Product page](#)

1 Image

Overview

Quantity:	100 µg
Target:	PCMTD1
Reactivity:	Human, Mouse, Rat
Host:	Rabbit
Clonality:	Polyclonal
Conjugate:	This PCMTD1 antibody is un-conjugated
Application:	Western Blotting (WB)

Product Details

Immunogen:	PCMTD1 antibody was raised using a synthetic peptide corresponding to a region with amino acids TGQNTWESKNILAVSFAPLVQPSKNDNGKPDSVGLPPCAVRNLQDLARIY
Purification:	Purified

Target Details

Target:	PCMTD1
Alternative Name:	PCMTD1 (PCMTD1 Products)
Background:	The function of PCMTD1 protein is not widely studied, and is yet to be elucidated fully.
Molecular Weight:	41 kDa (MW of target protein)

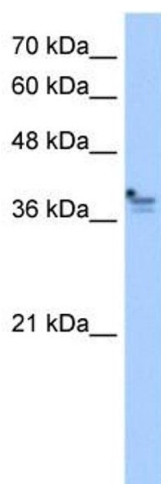
Application Details

Application Notes:	WB: 2.5 µg/mL Optimal conditions should be determined by the investigator.
Comment:	PCMTD1 Blocking Peptide, catalog no. 33R-9092, is also available for use as a blocking control in assays to test for specificity of this PCMTD1 antibody
Restrictions:	For Research Use only

Handling

Format:	Lyophilized
Reconstitution:	Lyophilized powder. Add distilled water for a 1 mg/mL concentration of PCMTD1 antibody in PBS
Concentration:	Lot specific
Buffer:	PBS
Handling Advice:	Avoid repeated freeze/thaw cycles.
Storage:	4 °C/-20 °C
Storage Comment:	Store at 2-8 °C for short periods. For longer periods of storage, store at -20 °C.

Images



Western Blotting

Image 1. PCMTD1 antibody used at 2.5 ug/ml to detect target protein.