

Datasheet for ABIN629649

anti-Asialoglycoprotein Receptor 1 antibody (N-Term)[Go to Product page](#)**1** Image

Overview

Quantity:	100 µg
Target:	Asialoglycoprotein Receptor 1 (ASGR1)
Binding Specificity:	N-Term
Reactivity:	Human, Dog
Host:	Rabbit
Clonality:	Polyclonal
Conjugate:	This Asialoglycoprotein Receptor 1 antibody is un-conjugated
Application:	Western Blotting (WB)

Product Details

Immunogen:	ASGR1 antibody was raised using the N terminal of ASGR1 corresponding to a region with amino acids RKMKSLESQLEKQQKDLSEDHSSLLLHVKQFVSDLRSLSCQMAALQGNGS
Specificity:	ASGR1 antibody was raised against the N terminal of ASGR1
Purification:	Purified

Target Details

Target:	Asialoglycoprotein Receptor 1 (ASGR1)
Alternative Name:	ASGR1 (ASGR1 Products)
Background:	ASGR1 encodes for a cell surface receptor binds to galactose-terminated glycoproteins. It transports these glycoproteins via a series of membrane vesicles and tubules to an acidic-sorting organelle where the receptor and ligand dissociates. Then the receptor is recycled back

Target Details

to the cell surface.

Molecular Weight: 33 kDa (MW of target protein)

Pathways: [Thyroid Hormone Synthesis](#)

Application Details

Application Notes: WB: 0.6 µg/mL
Optimal conditions should be determined by the investigator.

Comment: ASGR1 Blocking Peptide, catalog no. 33R-8004, is also available for use as a blocking control in assays to test for specificity of this ASGR1 antibody

Restrictions: For Research Use only

Handling

Format: Lyophilized

Reconstitution: Lyophilized powder. Add distilled water for a 1 mg/mL concentration of ASGR1 antibody in PBS

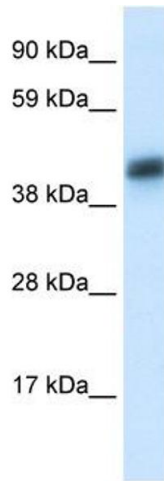
Concentration: Lot specific

Buffer: PBS

Handling Advice: Avoid repeated freeze/thaw cycles.
Dilute only prior to immediate use.

Storage: 4 °C/-20 °C

Storage Comment: Store at 2-8 °C for short periods. For longer periods of storage, store at -20 °C.



Western Blotting

Image 1. ASGR1 antibody used at 0.6 ug/ml to detect target protein.