

Datasheet for ABIN629650 anti-PPIA antibody

2 Images



[Go to Product page](#)

Overview

Quantity:	100 µg
Target:	PPIA
Reactivity:	Human, Mouse, Rat, Dog
Host:	Rabbit
Clonality:	Polyclonal
Conjugate:	This PPIA antibody is un-conjugated
Application:	Western Blotting (WB), Immunohistochemistry (IHC)

Product Details

Immunogen:	PPIA antibody was raised using a synthetic peptide corresponding to a region with amino acids TAKTEWLDGKHVVFGKVKEGMNIVEAMERFGSRNGKTSKKITIADCGQLE
Purification:	Purified

Target Details

Target:	PPIA
Alternative Name:	PPIA (PPIA Products)
Background:	PPIA is a member of the peptidyl-prolyl cis-trans isomerase (PPIase) family. PPIases catalyze the cis-trans isomerization of proline imidic peptide bonds in oligopeptides and accelerate the folding of proteins. PPIA is a cyclosporin binding-protein and may play a role in cyclosporin A-mediated immunosuppression. The protein can also interact with several HIV proteins, including p55 gag, Vpr, and capsid protein, and has been shown to be necessary for the

Target Details

formation of infectious HIV virions.

Molecular Weight: 18 kDa (MW of target protein)

Application Details

Application Notes: WB: 2.5 µg/mL, IHC: 4-8 µg/mL
Optimal conditions should be determined by the investigator.

Comment: PPIA Blocking Peptide, catalog no. 33R-8977, is also available for use as a blocking control in assays to test for specificity of this PPIA antibody

Restrictions: For Research Use only

Handling

Format: Lyophilized

Reconstitution: Lyophilized powder. Add distilled water for a 1 mg/mL concentration of PPIA antibody in PBS

Concentration: Lot specific

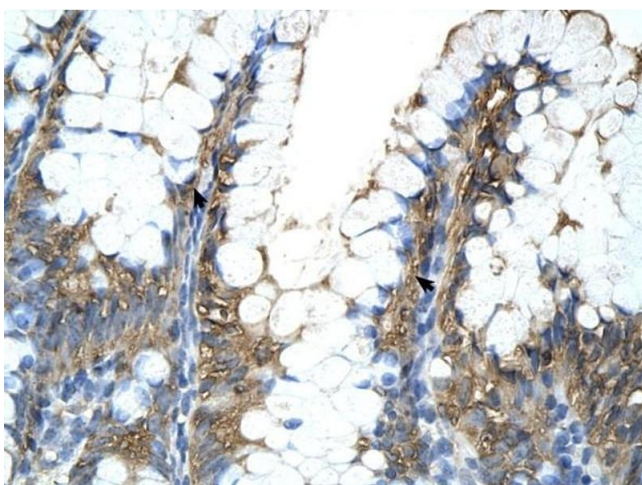
Buffer: PBS

Handling Advice: Avoid repeated freeze/thaw cycles.

Storage: 4 °C/-20 °C

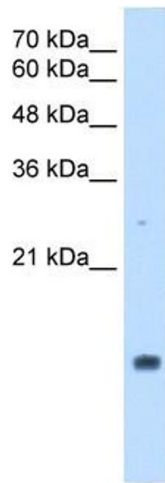
Storage Comment: Store at 2-8 °C for short periods. For longer periods of storage, store at -20 °C.

Images



Immunohistochemistry

Image 1. PPIA antibody was used for immunohistochemistry at a concentration of 4-8 µg/ml to stain Epithelial cells of intestinal villus (arrows) in Human Intestine. Magnification is at 400X



Western Blotting

Image 2. PPIA antibody used at 2.5 ug/ml to detect target protein.