

Datasheet for ABIN629651
anti-UPB1 antibody (Middle Region)



[Go to Product page](#)

1 Image

Overview

Quantity:	100 µg
Target:	UPB1
Binding Specificity:	Middle Region
Reactivity:	Human, Mouse, Rat, Dog, Zebrafish (Danio rerio), Drosophila melanogaster, Arabidopsis, C. elegans
Host:	Rabbit
Clonality:	Polyclonal
Conjugate:	This UPB1 antibody is un-conjugated
Application:	Western Blotting (WB)

Product Details

Immunogen:	UPB1 antibody was raised using the middle region of UPB1 corresponding to a region with amino acids AVVISNSGAVLGKTRKNHIPRVGDFNESTYYMEGNLGHPVFQTFGRIAV
Specificity:	UPB1 antibody was raised against the middle region of UPB1
Purification:	Purified

Target Details

Target:	UPB1
Alternative Name:	UPB1 (UPB1 Products)
Background:	UPB1 is a protein that belongs to the CN hydrolase family. Beta-ureidopropionase catalyzes the last step in the pyrimidine degradation pathway. The pyrimidine bases uracil and thymine are

Target Details

degraded via the consecutive action of dihydropyrimidine dehydrogenase (DHPDH), dihydropyrimidinase (DHP) and beta-ureidopropionase (UP) to beta-alanine and beta-aminoisobutyric acid, respectively. UP deficiencies are associated with N-carbamyl-beta-amino aciduria and may lead to abnormalities in neurological activity.

Molecular Weight: 42 kDa (MW of target protein)

Application Details

Application Notes: WB: 2.5 µg/mL
Optimal conditions should be determined by the investigator.

Comment: UPB1 Blocking Peptide, catalog no. 33R-1619, is also available for use as a blocking control in assays to test for specificity of this UPB1 antibody

Restrictions: For Research Use only

Handling

Format: Lyophilized

Reconstitution: Lyophilized powder. Add distilled water for a 1 mg/mL concentration of UPB1 antibody in PBS

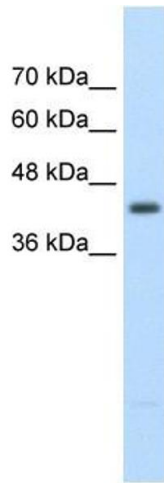
Concentration: Lot specific

Buffer: PBS

Handling Advice: Avoid repeated freeze/thaw cycles.
Dilute only prior to immediate use.

Storage: 4 °C/-20 °C

Storage Comment: Store at 2-8 °C for short periods. For longer periods of storage, store at -20 °C.



Western Blotting

Image 1. UPB1 antibody used at 2.5 ug/ml to detect target protein.