

Datasheet for ABIN629652  
**anti-FKBP6 antibody (Middle Region)**



[Go to Product page](#)

2 Images

## Overview

Quantity:	100 µg
Target:	FKBP6
Binding Specificity:	Middle Region
Reactivity:	Human, Mouse, Rat, Dog
Host:	Rabbit
Clonality:	Polyclonal
Conjugate:	This FKBP6 antibody is un-conjugated
Application:	Western Blotting (WB), Immunohistochemistry (IHC)

## Product Details

Immunogen:	FKBP6 antibody was raised using the middle region of FKBP6 corresponding to a region with amino acids FCALSAEQDQFPLQKVLKVAATEREFGNYLFRQNRFYDAKVRYKRALLL
Specificity:	FKBP6 antibody was raised against the middle region of FKBP6
Purification:	Purified

## Target Details

Target:	FKBP6
Alternative Name:	FKBP6 ( <a href="#">FKBP6 Products</a> )
Background:	FKBP6 is a member of the immunophilin protein family, which play a role in immunoregulation and basic cellular processes involving protein folding and trafficking. FKBP6 is a cis-trans prolyl isomerase that binds to the immunosuppressants FK506 and rapamycin.

## Target Details

Molecular Weight: 53 kDa (MW of target protein)

Pathways: [M Phase](#)

## Application Details

Application Notes: WB: 1.25 µg/mL, IHC: 4-8 µg/mL  
Optimal conditions should be determined by the investigator.

Comment: FKBP6 Blocking Peptide, catalog no. 33R-2850, is also available for use as a blocking control in assays to test for specificity of this FKBP6 antibody

Restrictions: For Research Use only

## Handling

Format: Lyophilized

Reconstitution: Lyophilized powder. Add distilled water for a 1 mg/mL concentration of FKBP6 antibody in PBS

Concentration: Lot specific

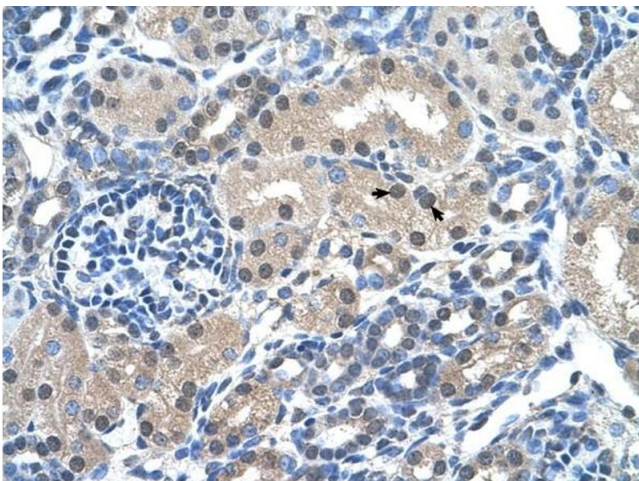
Buffer: PBS

Handling Advice: Avoid repeated freeze/thaw cycles.  
Dilute only prior to immediate use.

Storage: 4 °C/-20 °C

Storage Comment: Store at 2-8 °C for short periods. For longer periods of storage, store at -20 °C.

## Images



### Immunohistochemistry

**Image 1.** FKBP6 antibody was used for immunohistochemistry at a concentration of 4-8 µg/ml to stain Epithelial cells of renal tubule (arrows) in Human Kidney. Magnification is at 400X



### Western Blotting

**Image 2.** FKBP6 antibody used at 1.25 ug/ml to detect target protein.