

Datasheet for ABIN629654
anti-COL6A2 antibody (C-Term)



[Go to Product page](#)

1 Image

Overview

Quantity:	100 µg
Target:	COL6A2
Binding Specificity:	C-Term
Reactivity:	Human
Host:	Rabbit
Clonality:	Polyclonal
Conjugate:	This COL6A2 antibody is un-conjugated
Application:	Western Blotting (WB)

Product Details

Immunogen:	Collagen Type VI Alpha 2 antibody was raised using the C terminal of COL6 A2 corresponding to a region with amino acids ARRFVEQVARRLTLARRDDDPLNARVALLQFGGPGEQQVAFPLSHNLTAI
Specificity:	Collagen Type VI Alpha 2 antibody was raised against the C terminal of COL6 A2
Purification:	Purified

Target Details

Target:	COL6A2
Alternative Name:	Collagen Type VI alpha 2 (COL6A2 Products)
Background:	COL6A2 is one of the three alpha chains of type VI collagen, a beaded filament collagen found in most connective tissues. The protein contains several domains similar to von Willebrand

Target Details

Factor type A domains. These domains have been shown to bind extracellular matrix proteins, an interaction that explains the importance of this collagen in organizing matrix components. Mutations in its gene are associated with Bethlem myopathy and Ullrich scleroatonic muscular dystrophy.

Molecular Weight: 46 kDa (MW of target protein)

Application Details

Application Notes: WB: 1.25 µg/mL
Optimal conditions should be determined by the investigator.

Comment: Collagen Type VI Alpha 2 Blocking Peptide, catalog no. 33R-1491, is also available for use as a blocking control in assays to test for specificity of this Collagen Type VI Alpha 2 antibody

Restrictions: For Research Use only

Handling

Format: Lyophilized

Reconstitution: Lyophilized powder. Add distilled water for a 1 mg/mL concentration of COL0 2 antibody in PBS

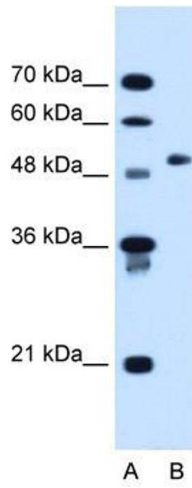
Concentration: Lot specific

Buffer: PBS

Handling Advice: Avoid repeated freeze/thaw cycles.
Dilute only prior to immediate use.

Storage: 4 °C/-20 °C

Storage Comment: Store at 2-8 °C for short periods. For longer periods of storage, store at -20 °C.



Western Blotting

Image 1. Collagen Type VI Alpha 2 antibody used at 1.25 ug/ml to detect target protein.