

Datasheet for ABIN629657

**anti-Liver Arginase antibody (Arg1, N-Term)**[Go to Product page](#)**3** Images

## Overview

Quantity:	100 µg
Target:	Liver Arginase (ARG1)
Binding Specificity:	Arg1, N-Term
Reactivity:	Human, Rat, Dog
Host:	Rabbit
Clonality:	Polyclonal
Conjugate:	This Liver Arginase antibody is un-conjugated
Application:	Western Blotting (WB), Immunohistochemistry (IHC)

## Product Details

Immunogen:	Arginase 1 antibody was raised using the N terminal of ARG1 corresponding to a region with amino acids HSLAIGSISGHARVHPDLGVIWVDAHTDINTPLTTTSGNLHGQPVSFLK
Specificity:	Arginase 1 antibody was raised against the N terminal of ARG1
Purification:	Purified

## Target Details

Target:	Liver Arginase (ARG1)
Alternative Name:	Arginase 1 ( <a href="#">ARG1 Products</a> )
Background:	Arginase catalyzes the hydrolysis of arginine to ornithine and urea. The type I isoform of ARG1, is a cytosolic enzyme and expressed predominantly in the liver as a component of the urea cycle. Inherited deficiency of this enzyme results in argininemia, an autosomal recessive

## Target Details

---

disorder characterized by hyperammonemia.

Molecular Weight: 35 kDa (MW of target protein)

Pathways: [Cellular Response to Molecule of Bacterial Origin](#)

## Application Details

---

Application Notes: WB: 5 µg/mL, IHC: 4-8 µg/mL  
Optimal conditions should be determined by the investigator.

Comment: Arginase 1 Blocking Peptide, catalog no. 33R-3855, is also available for use as a blocking control in assays to test for specificity of this Arginase 1 antibody

Restrictions: For Research Use only

## Handling

---

Format: Lyophilized

Reconstitution: Lyophilized powder. Add distilled water for a 1 mg/mL concentration of ARG1 antibody in PBS

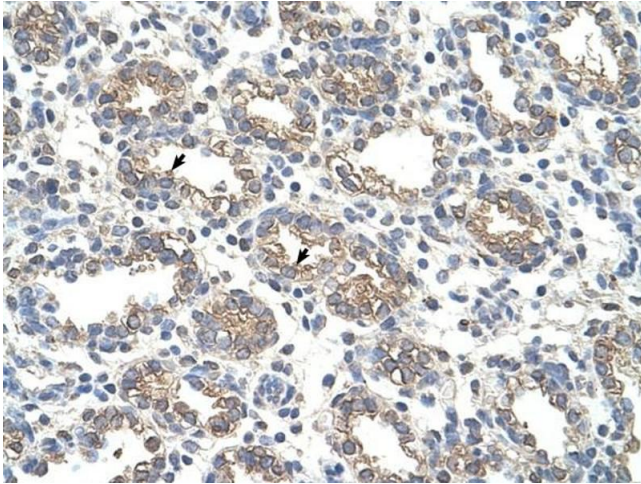
Concentration: Lot specific

Buffer: PBS

Handling Advice: Avoid repeated freeze/thaw cycles.  
Dilute only prior to immediate use.

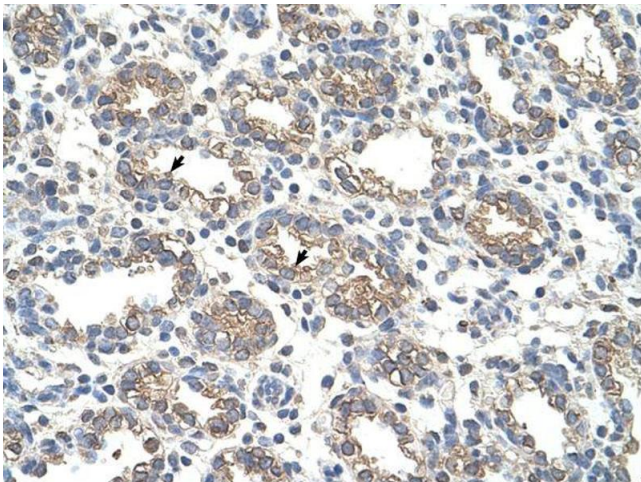
Storage: 4 °C/-20 °C

Storage Comment: Store at 2-8 °C for short periods. For longer periods of storage, store at -20 °C.



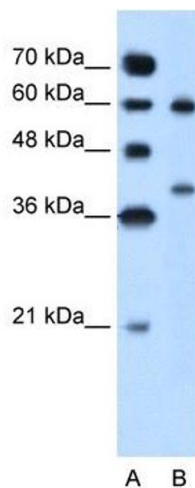
#### Immunohistochemistry

**Image 1.** Arginase 1 antibody was used for immunohistochemistry at a concentration of 4-8 ug/ml to stain Alveolar cells (arrows) in Human Lung. Magnification is at 400X



#### Immunohistochemistry

**Image 2.** Arginase 1 antibody was used for immunohistochemistry at a concentration of 4-8 ug/ml. Magnification is at 400X



#### Western Blotting

**Image 3.** Arginase 1 antibody used at 5 ug/ml to detect target protein.