

Datasheet for ABIN629659
anti-ALG1L6P antibody (C-Term)



[Go to Product page](#)

1 Image

Overview

Quantity:	100 µg
Target:	ALG1L6P
Binding Specificity:	C-Term
Reactivity:	Human
Host:	Rabbit
Clonality:	Polyclonal
Conjugate:	This ALG1L6P antibody is un-conjugated
Application:	Western Blotting (WB)

Product Details

Immunogen:	LOC339879 antibody was raised using the C terminal of LOC339879 corresponding to a region with amino acids HELVKHEENGLVFEDSEELAAQLQMLFSNFPDPAGKLNQFRKNLQESQQL
Specificity:	LOC339879 antibody was raised against the C terminal of LOC339879
Purification:	Purified

Target Details

Target:	ALG1L6P
Alternative Name:	LOC339879 (ALG1L6P Products)
Background:	The function of LOC339879 protein is not widely studied, and is yet to be elucidated fully.
Molecular Weight:	36 kDa (MW of target protein)

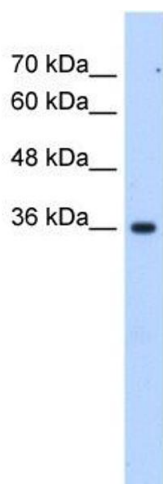
Application Details

Application Notes:	WB: 2.5 µg/mL Optimal conditions should be determined by the investigator.
Comment:	LOC339879 Blocking Peptide, catalog no. 33R-3720, is also available for use as a blocking control in assays to test for specificity of this LOC339879 antibody
Restrictions:	For Research Use only

Handling

Format:	Lyophilized
Reconstitution:	Lyophilized powder. Add distilled water for a 1 mg/mL concentration of LOC339879 antibody in PBS
Concentration:	Lot specific
Buffer:	PBS
Handling Advice:	Avoid repeated freeze/thaw cycles. Dilute only prior to immediate use.
Storage:	4 °C/-20 °C
Storage Comment:	Store at 2-8 °C for short periods. For longer periods of storage, store at -20 °C.

Images



Western Blotting

Image 1. LOC339879 antibody used at 2.5 µg/ml to detect target protein.