

Datasheet for ABIN629664 **anti-MTHFD2 antibody**



[Go to Product page](#)

1 Image

Overview

Quantity:	100 µg
Target:	MTHFD2
Reactivity:	Human, Mouse, Rat, Dog
Host:	Rabbit
Clonality:	Polyclonal
Conjugate:	This MTHFD2 antibody is un-conjugated
Application:	Western Blotting (WB)

Product Details

Immunogen:	MTHFD2 antibody was raised using a synthetic peptide corresponding to a region with amino acids LPLPEHIDERRICNAVSPDKDVDGFHVINVGRMCLDQYSMLPATPWGVWE
Purification:	Purified

Target Details

Target:	MTHFD2
Alternative Name:	MTHFD2 (MTHFD2 Products)
Background:	MTHFD2 is a nuclear-encoded mitochondrial bifunctional enzyme with methylenetetrahydrofolate dehydrogenase and methenyltetrahydrofolate cyclohydrolase activities. The enzyme functions as a homodimer and is unique in its absolute requirement for magnesium and inorganic phosphate. Formation of the enzyme-magnesium complex allows binding of NAD.

Target Details

Molecular Weight: 35 kDa (MW of target protein)

Application Details

Application Notes: WB: 1.25 µg/mL
Optimal conditions should be determined by the investigator.

Comment: MTHFD2 Blocking Peptide, catalog no. 33R-5273, is also available for use as a blocking control in assays to test for specificity of this MTHFD2 antibody

Restrictions: For Research Use only

Handling

Format: Lyophilized

Reconstitution: Lyophilized powder. Add distilled water for a 1 mg/mL concentration of MTHFD2 antibody in PBS

Concentration: Lot specific

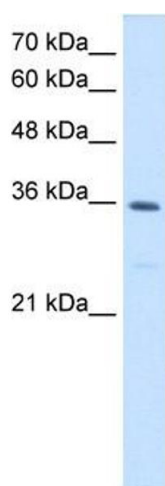
Buffer: PBS

Handling Advice: Avoid repeated freeze/thaw cycles.

Storage: 4 °C/-20 °C

Storage Comment: Store at 2-8 °C for short periods. For longer periods of storage, store at -20 °C.

Images



Western Blotting

Image 1. MTHFD2 antibody used at 1.25 ug/ml to detect target protein.