

## Datasheet for ABIN629666 **anti-CKMT2 antibody**

### 2 Images



[Go to Product page](#)

### Overview

Quantity:	100 µg
Target:	CKMT2
Reactivity:	Human, Mouse, Dog
Host:	Rabbit
Clonality:	Polyclonal
Conjugate:	This CKMT2 antibody is un-conjugated
Application:	Western Blotting (WB), Immunohistochemistry (IHC)

### Product Details

Immunogen:	CKMT2 antibody was raised using a synthetic peptide corresponding to a region with amino acids GTSVLTTGYLLNRQKVCAEVREQPRLFPPSADYPDLRKHNNCMAECLTPA
Purification:	Purified

### Target Details

Target:	CKMT2
Alternative Name:	CKMT2 ( <a href="#">CKMT2 Products</a> )
Background:	Mitochondrial creatine kinase (MtCK) is responsible for the transfer of high energy phosphate from mitochondria to the cytosolic carrier, creatine. It belongs to the creatine kinase isoenzyme family. It exists as two isoenzymes, sarcomeric MtCK and ubiquitous MtCK, encoded by separate genes. Mitochondrial creatine kinase occurs in two different oligomeric forms: dimers and octamers, in contrast to the exclusively dimeric cytosolic creatine kinase isoenzymes.

## Target Details

Molecular Weight: 46 kDa (MW of target protein)

## Application Details

Application Notes: WB: 1.25 µg/mL, IHC: 4-8 µg/mL  
Optimal conditions should be determined by the investigator.

Comment: CKMT2 Blocking Peptide, catalog no. 33R-3621, is also available for use as a blocking control in assays to test for specificity of this CKMT2 antibody

Restrictions: For Research Use only

## Handling

Format: Lyophilized

Reconstitution: Lyophilized powder. Add distilled water for a 1 mg/mL concentration of CKMT2 antibody in PBS

Concentration: Lot specific

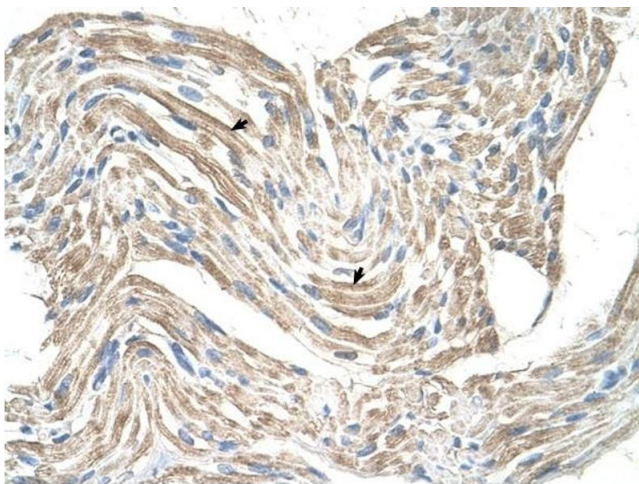
Buffer: PBS

Handling Advice: Avoid repeated freeze/thaw cycles.

Storage: 4 °C/-20 °C

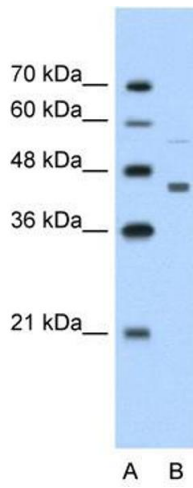
Storage Comment: Store at 2-8 °C for short periods. For longer periods of storage, store at -20 °C.

## Images



### Immunohistochemistry

**Image 1.** CKMT2 antibody was used for immunohistochemistry at a concentration of 4-8 µg/ml to stain Skeletal muscle cells (arrows) in Human Muscle. Magnification is at 400X



### Western Blotting

**Image 2.** CKMT2 antibody used at 1.25 ug/ml to detect target protein.