

Datasheet for ABIN629669
anti-S100A3 antibody (N-Term)



[Go to Product page](#)

2 Images

Overview

Quantity:	100 µg
Target:	S100A3
Binding Specificity:	N-Term
Reactivity:	Human
Host:	Rabbit
Clonality:	Polyclonal
Conjugate:	This S100A3 antibody is un-conjugated
Application:	Western Blotting (WB), Immunohistochemistry (IHC)

Product Details

Immunogen:	S100 A3 antibody was raised using the N terminal of S100 3 corresponding to a region with amino acids MARPLEQAVAAIVCTFQEYAGRCGDKYKLCQAEKELLQKELATWTPTEF
Specificity:	S100 A3 antibody was raised against the N terminal of S100 3
Purification:	Purified

Target Details

Target:	S100A3
Alternative Name:	S100A3 (S100A3 Products)
Background:	S100A3 is a member of the S100 family of proteins containing 2 EF-hand calcium-binding motifs. S100 proteins are localized in the cytoplasm and/or nucleus of a wide range of cells, and involved in the regulation of a number of cellular processes such as cell cycle progression

Target Details

and differentiation. This protein has the highest content of cysteines of all S100 proteins, has a high affinity for Zinc, and is highly expressed in human hair cuticle. The precise function of this protein is unknown.

Molecular Weight: 11 kDa (MW of target protein)

Pathways: [S100 Proteins](#)

Application Details

Application Notes: WB: 5 µg/mL, IHC: 4-8 µg/mL
Optimal conditions should be determined by the investigator.

Comment: S100A3 Blocking Peptide, catalog no. 33R-5733, is also available for use as a blocking control in assays to test for specificity of this S100A3 antibody

Restrictions: For Research Use only

Handling

Format: Lyophilized

Reconstitution: Lyophilized powder. Add distilled water for a 1 mg/mL concentration of S100 3 antibody in PBS

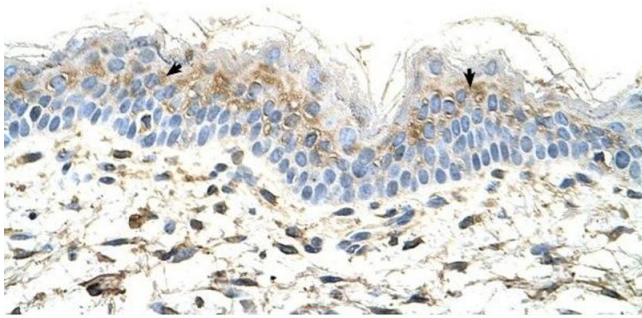
Concentration: Lot specific

Buffer: PBS

Handling Advice: Avoid repeated freeze/thaw cycles.
Dilute only prior to immediate use.

Storage: 4 °C/-20 °C

Storage Comment: Store at 2-8 °C for short periods. For longer periods of storage, store at -20 °C.



Immunohistochemistry

Image 1. S100A3 antibody was used for immunohistochemistry at a concentration of 4-8 ug/ml to stain Squamous epithelial cells (arrows) in Human Skin. Magnification is at 400X



Western Blotting

Image 2. S100A3 antibody used at 5 ug/ml to detect target protein.