

## Datasheet for ABIN629672 **anti-ATP5B antibody (N-Term)**

### 3 Images



[Go to Product page](#)

### Overview

Quantity:	100 µg
Target:	ATP5B
Binding Specificity:	N-Term
Reactivity:	Human, Mouse, Rat
Host:	Rabbit
Clonality:	Polyclonal
Conjugate:	This ATP5B antibody is un-conjugated
Application:	Western Blotting (WB), Immunohistochemistry (IHC)

### Product Details

Immunogen:	ATP5 B antibody was raised using the N terminal of ATP5 corresponding to a region with amino acids PIKIPVGPETLGRIMNVIGEPIDERGPIKTKQFAPIHAEAPEFMEMSVEQ
Specificity:	ATP5 B antibody was raised against the N terminal of ATP5
Purification:	Purified

### Target Details

Target:	ATP5B
Alternative Name:	ATP5B ( <a href="#">ATP5B Products</a> )
Background:	ATP5B is a subunit of mitochondrial ATP synthase. Mitochondrial ATP synthase catalyzes ATP synthesis, utilizing an electrochemical gradient of protons across the inner membrane during oxidative phosphorylation. ATP synthase is composed of two linked multi-subunit complexes:

## Target Details

---

the soluble catalytic core, F1, and the membrane-spanning component, Fo, comprising the proton channel.

Molecular Weight: 52 kDa (MW of target protein)

Pathways: [Proton Transport, Ribonucleoside Biosynthetic Process](#)

## Application Details

---

Application Notes: WB: 1.25 µg/mL, IHC: 4-8 µg/mL  
Optimal conditions should be determined by the investigator.

Comment: ATP5B Blocking Peptide, catalog no. 33R-7154, is also available for use as a blocking control in assays to test for specificity of this ATP5B antibody

Restrictions: For Research Use only

## Handling

---

Format: Lyophilized

Reconstitution: Lyophilized powder. Add distilled water for a 1 mg/mL concentration of ATP0 antibody in PBS

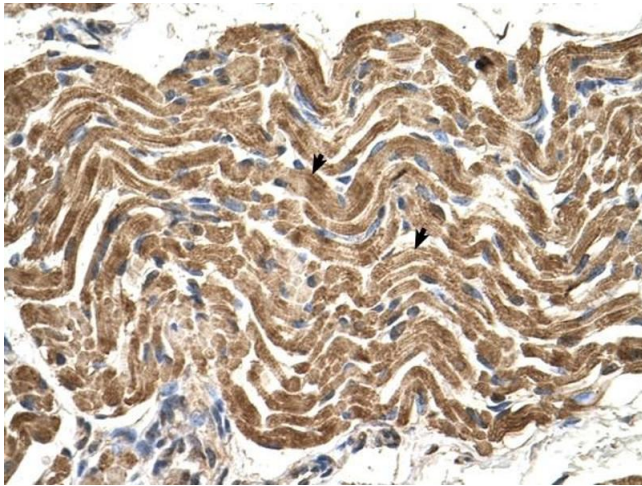
Concentration: Lot specific

Buffer: PBS

Handling Advice: Avoid repeated freeze/thaw cycles.  
Dilute only prior to immediate use.

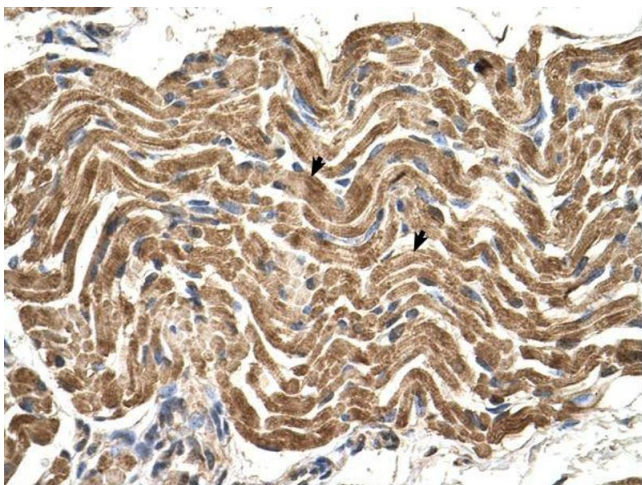
Storage: 4 °C/-20 °C

Storage Comment: Store at 2-8 °C for short periods. For longer periods of storage, store at -20 °C.



### Immunohistochemistry

**Image 1.** ATP5B antibody was used for immunohistochemistry at a concentration of 4-8 ug/ml to stain Skeletal muscle cells (arrows) in Human Muscle. Magnification is at 400X



### Immunohistochemistry

**Image 2.** ATP5B antibody was used for immunohistochemistry at a concentration of 4-8 ug/ml. Magnification is at 400X



### Western Blotting

**Image 3.** ATP5B antibody used at 1.25 ug/ml to detect target protein.