

## Datasheet for ABIN629676 **anti-GCDH antibody (C-Term)**

### 3 Images



[Go to Product page](#)

#### Overview

Quantity:	100 µg
Target:	GCDH
Binding Specificity:	C-Term
Reactivity:	Human, Mouse, Rat, Zebrafish (Danio rerio), Dog
Host:	Rabbit
Clonality:	Polyclonal
Conjugate:	This GCDH antibody is un-conjugated
Application:	Western Blotting (WB), Immunohistochemistry (IHC)

#### Product Details

Immunogen:	GCDH antibody was raised using the C terminal of GCDH corresponding to a region with amino acids IARQARDMLGGNGISDEYHVIRHAMNLEAVNTYEGTHDIHALILGRAITG
Specificity:	GCDH antibody was raised against the C terminal of GCDH
Purification:	Purified

#### Target Details

Target:	GCDH
Alternative Name:	GCDH ( <a href="#">GCDH Products</a> )
Background:	GCDH belongs to the acyl-CoA dehydrogenase family. It catalyzes the oxidative decarboxylation of glutaryl-CoA to crotonyl-CoA and CO(2) in the degradative pathway of L-lysine, L-hydroxylysine, and L-tryptophan metabolism. It uses electron transfer flavoprotein as its

## Target Details

---

electron acceptor. The enzyme exists in the mitochondrial matrix as a homotetramer of 45 kDa subunits.

Molecular Weight: 48 kDa (MW of target protein)

## Application Details

---

Application Notes: WB: 2.5 µg/mL, IHC: 4-8 µg/mL  
Optimal conditions should be determined by the investigator.

Comment: GCDH Blocking Peptide, catalog no. 33R-3897, is also available for use as a blocking control in assays to test for specificity of this GCDH antibody

Restrictions: For Research Use only

## Handling

---

Format: Lyophilized

Reconstitution: Lyophilized powder. Add distilled water for a 1 mg/mL concentration of GCDH antibody in PBS

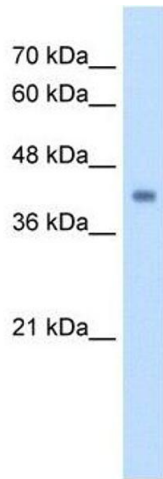
Concentration: Lot specific

Buffer: PBS

Handling Advice: Avoid repeated freeze/thaw cycles.  
Dilute only prior to immediate use.

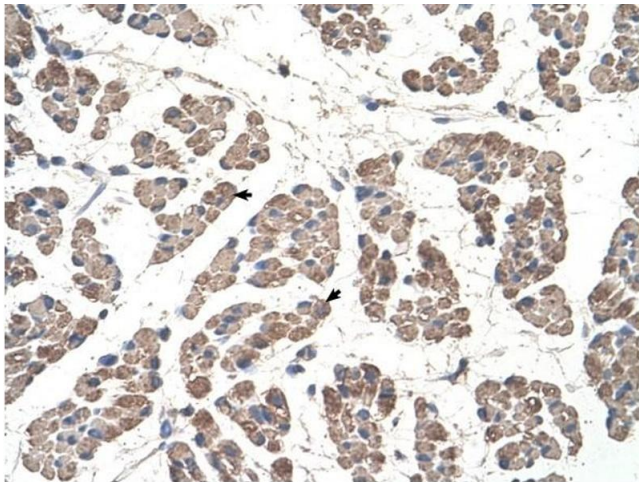
Storage: 4 °C/-20 °C

Storage Comment: Store at 2-8 °C for short periods. For longer periods of storage, store at -20 °C.



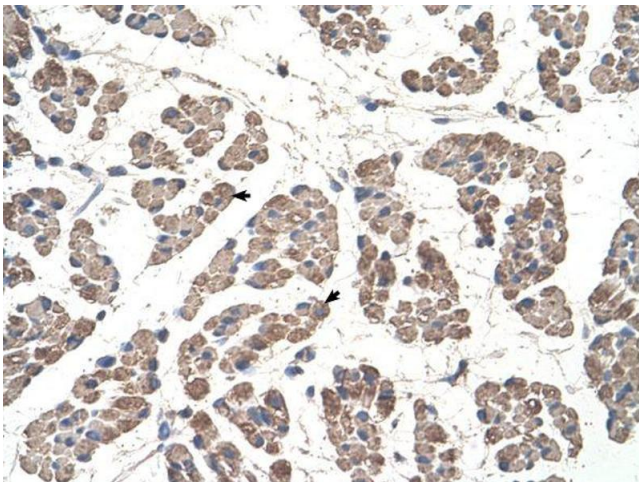
### Western Blotting

**Image 1.** GCDH antibody used at 2.5 ug/ml to detect target protein.



### Immunohistochemistry

**Image 2.** GCDH antibody was used for immunohistochemistry at a concentration of 4-8 ug/ml to stain Skeletal muscle cells (arrows) in Human Muscle. Magnification is at 400X



### Immunohistochemistry

**Image 3.** GCDH antibody was used for immunohistochemistry at a concentration of 4-8 ug/ml. Magnification is at 400X