

Datasheet for ABIN629677 **anti-ECH1 antibody (N-Term)**



[Go to Product page](#)

1 Image

Overview

Quantity:	100 µg
Target:	ECH1
Binding Specificity:	N-Term
Reactivity:	Human, Mouse, Rat
Host:	Rabbit
Clonality:	Polyclonal
Conjugate:	This ECH1 antibody is un-conjugated
Application:	Western Blotting (WB)

Product Details

Immunogen:	ECH1 antibody was raised using the N terminal of ECH1 corresponding to a region with amino acids PDHSYESLRVTSQAQKHVLHVQLNRPNKRNAMNKVFWREMVECFNKISRDA
Specificity:	ECH1 antibody was raised against the N terminal of ECH1
Purification:	Purified

Target Details

Target:	ECH1
Alternative Name:	ECH1 (ECH1 Products)
Background:	ECH1 is a member of the hydratase/isomerase superfamily. ECH1 shows high sequence similarity to enoyl-coenzyme A (CoA) hydratases of several species, particularly within a conserved domain characteristic of these proteins. The protein contains a C-terminal

Target Details

peroxisomal targeting sequence, localizes to the peroxisome. This enzyme functions in the auxiliary step of the fatty acid beta-oxidation pathway.

Molecular Weight: 36 kDa (MW of target protein)

Pathways: [Monocarboxylic Acid Catabolic Process](#)

Application Details

Application Notes: WB: 2.5 µg/mL
Optimal conditions should be determined by the investigator.

Comment: ECH1 Blocking Peptide, catalog no. 33R-7014, is also available for use as a blocking control in assays to test for specificity of this ECH1 antibody

Restrictions: For Research Use only

Handling

Format: Lyophilized

Reconstitution: Lyophilized powder. Add distilled water for a 1 mg/mL concentration of ECH1 antibody in PBS

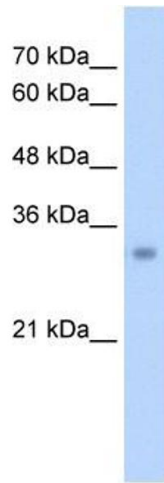
Concentration: Lot specific

Buffer: PBS

Handling Advice: Avoid repeated freeze/thaw cycles.
Dilute only prior to immediate use.

Storage: 4 °C/-20 °C

Storage Comment: Store at 2-8 °C for short periods. For longer periods of storage, store at -20 °C.



Western Blotting

Image 1. ECH1 antibody used at 2.5 ug/ml to detect target protein.