

Datasheet for ABIN629679
anti-ALDH4A1 antibody (C-Term)



[Go to Product page](#)

3 Images

Overview

Quantity:	100 µg
Target:	ALDH4A1
Binding Specificity:	C-Term
Reactivity:	Human, Mouse, Dog, Zebrafish (Danio rerio)
Host:	Rabbit
Clonality:	Polyclonal
Conjugate:	This ALDH4A1 antibody is un-conjugated
Application:	Western Blotting (WB), Immunohistochemistry (IHC)

Product Details

Immunogen:	ALDH4 A1 antibody was raised using the C terminal of ALDH4 1 corresponding to a region with amino acids RNAAGNFYINDKSTGSIVGQQPFGGARASGTNDKPGPHYILRWTSQVI
Specificity:	ALDH4 A1 antibody was raised against the C terminal of ALDH4 1
Purification:	Purified

Target Details

Target:	ALDH4A1
Alternative Name:	ALDH4A1 (ALDH4A1 Products)
Background:	ALDH4A1 belongs to the aldehyde dehydrogenase family of proteins. This enzyme is a mitochondrial matrix NAD-dependent dehydrogenase which catalyzes the second step of the proline degradation pathway, converting pyrroline-5-carboxylate to glutamate. Deficiency of this

Target Details

enzyme is associated with type II hyperprolinemia, an autosomal recessive disorder characterized by accumulation of delta-1-pyrroline-5-carboxylate (P5C) and proline.

Molecular Weight: 62 kDa (MW of target protein)

Pathways: [Monocarboxylic Acid Catabolic Process](#)

Application Details

Application Notes: WB: 1.25 µg/mL, IHC: 4-8 µg/mL
Optimal conditions should be determined by the investigator.

Comment: ALDH4A1 Blocking Peptide, catalog no. 33R-8071, is also available for use as a blocking control in assays to test for specificity of this ALDH4A1 antibody

Restrictions: For Research Use only

Handling

Format: Lyophilized

Reconstitution: Lyophilized powder. Add distilled water for a 1 mg/mL concentration of ALDH0 1 antibody in PBS

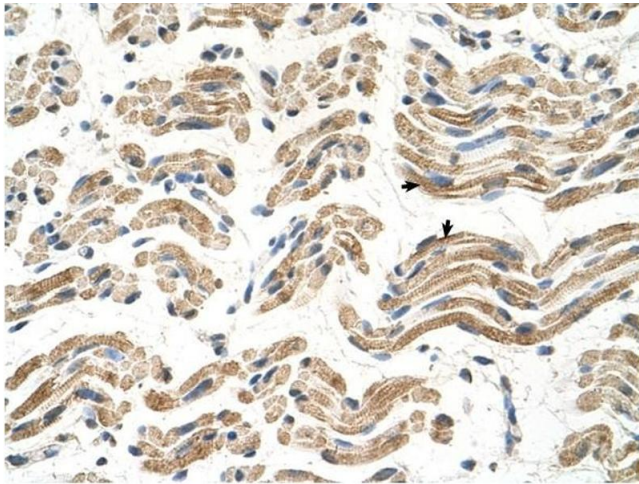
Concentration: Lot specific

Buffer: PBS

Handling Advice: Avoid repeated freeze/thaw cycles.
Dilute only prior to immediate use.

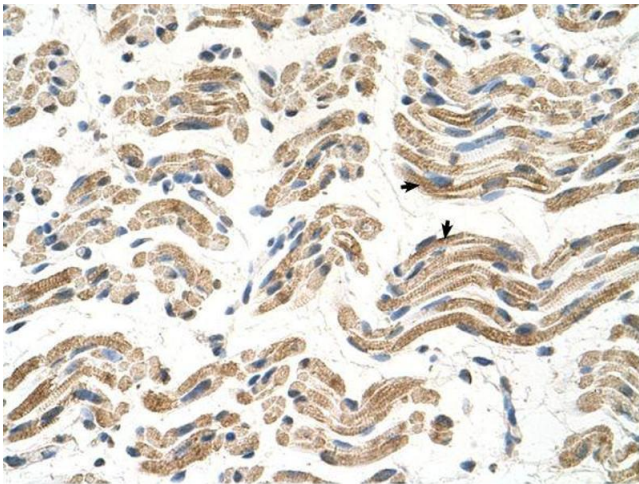
Storage: 4 °C/-20 °C

Storage Comment: Store at 2-8 °C for short periods. For longer periods of storage, store at -20 °C.



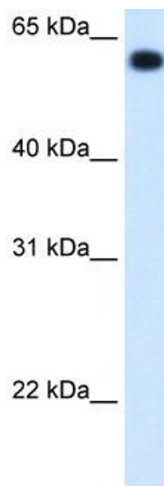
Immunohistochemistry

Image 1. ALDH4A1 antibody was used for immunohistochemistry at a concentration of 4-8 ug/ml to stain Skeletal muscle cells (arrows) in Human Muscle. Magnification is at 400X



Immunohistochemistry

Image 2. ALDH4A1 antibody was used for immunohistochemistry at a concentration of 4-8 ug/ml. Magnification is at 400X



Western Blotting

Image 3. ALDH4A1 antibody used at 1.25 ug/ml to detect target protein.