

## Datasheet for ABIN629680 **anti-ECHS1 antibody (C-Term)**



[Go to Product page](#)

### 1 Image

#### Overview

Quantity:	100 µg
Target:	ECHS1
Binding Specificity:	C-Term
Reactivity:	Human
Host:	Rabbit
Clonality:	Polyclonal
Conjugate:	This ECHS1 antibody is un-conjugated
Application:	Western Blotting (WB)

#### Product Details

Immunogen:	ECHS1 antibody was raised using the C terminal of ECHS1 corresponding to a region with amino acids KESVNAAFEMTLTEGSKLEKKLFYSTFATDDRKEGMTAFVEKRKANFKDQ
Specificity:	ECHS1 antibody was raised against the C terminal of ECHS1
Purification:	Purified

#### Target Details

Target:	ECHS1
Alternative Name:	ECHS1 ( <a href="#">ECHS1 Products</a> )
Background:	ECHS1 functions in the second step of the mitochondrial fatty acid beta-oxidation pathway. It catalyzes the hydration of 2-trans-enoyl-coenzyme A (CoA) intermediates to L-3-hydroxyacyl-CoAs. ECHS1 is a member of the hydratase/isomerase superfamily. It localizes to the

## Target Details

---

mitochondrial matrix.

Molecular Weight: 28 kDa (MW of target protein)

Pathways: [Monocarboxylic Acid Catabolic Process](#)

## Application Details

---

Application Notes: WB: 1.25 µg/mL  
Optimal conditions should be determined by the investigator.

Comment: ECHS1 Blocking Peptide, catalog no. 33R-4359, is also available for use as a blocking control in assays to test for specificity of this ECHS1 antibody

Restrictions: For Research Use only

## Handling

---

Format: Lyophilized

Reconstitution: Lyophilized powder. Add distilled water for a 1 mg/mL concentration of ECHS1 antibody in PBS

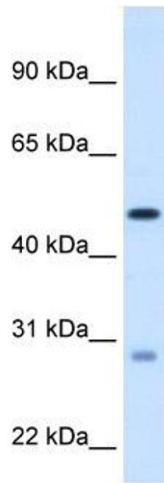
Concentration: Lot specific

Buffer: PBS

Handling Advice: Avoid repeated freeze/thaw cycles.  
Dilute only prior to immediate use.

Storage: 4 °C/-20 °C

Storage Comment: Store at 2-8 °C for short periods. For longer periods of storage, store at -20 °C.



### Western Blotting

**Image 1.** ECHS1 antibody used at 1.25 ug/ml to detect target protein.