

## Datasheet for ABIN629684 **anti-CPS1 antibody (N-Term)**

### 3 Images



[Go to Product page](#)

#### Overview

Quantity:	100 µg
Target:	CPS1
Binding Specificity:	N-Term
Reactivity:	Human
Host:	Rabbit
Clonality:	Polyclonal
Conjugate:	This CPS1 antibody is un-conjugated
Application:	Western Blotting (WB), Immunohistochemistry (IHC)

#### Product Details

Immunogen:	CPS1 antibody was raised using the N terminal of CPS1 corresponding to a region with amino acids QWLQEEKVPAIYGVDTRMLTKIIRDKGTMLGKIEFEGQPVDFVDPNKQNL
Specificity:	CPS1 antibody was raised against the N terminal of CPS1
Purification:	Purified

#### Target Details

Target:	CPS1
Alternative Name:	CPS1 ( <a href="#">CPS1 Products</a> )
Background:	Carbamoyl phosphate synthetase I is the rate-limiting enzyme that catalyzes the first committed step of the hepatic urea cycle. The mitochondrial isozyme is designated CPS I and the cytoplasmic enzyme CPS II. CPS II is part of a multifunctional enzyme, called the CAD

## Target Details

---

trifunctional protein of pyrimidine biosynthesis.

Molecular Weight: 165 kDa (MW of target protein)

Pathways: [Response to Growth Hormone Stimulus](#), [Cellular Glucan Metabolic Process](#)

## Application Details

---

Application Notes: WB: 1.25 µg/mL, IHC: 4-8 µg/mL  
Optimal conditions should be determined by the investigator.

Comment: CPS1 Blocking Peptide, catalog no. 33R-7787, is also available for use as a blocking control in assays to test for specificity of this CPS1 antibody

Restrictions: For Research Use only

## Handling

---

Format: Lyophilized

Reconstitution: Lyophilized powder. Add distilled water for a 1 mg/mL concentration of CPS1 antibody in PBS

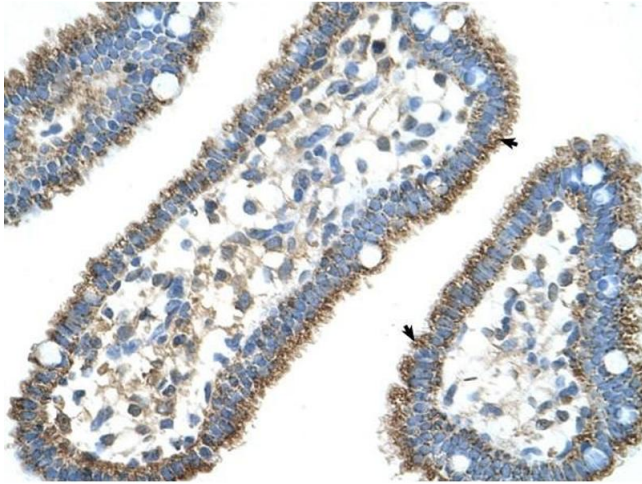
Concentration: Lot specific

Buffer: PBS

Handling Advice: Avoid repeated freeze/thaw cycles.  
Dilute only prior to immediate use.

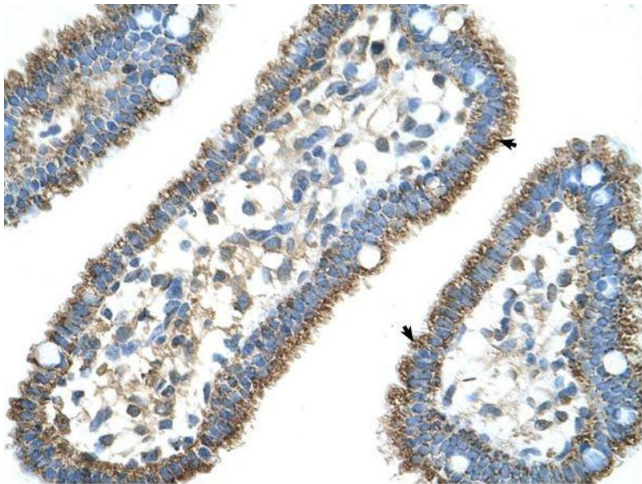
Storage: 4 °C/-20 °C

Storage Comment: Store at 2-8 °C for short periods. For longer periods of storage, store at -20 °C.



#### Immunohistochemistry

**Image 1.** CPS1 antibody was used for immunohistochemistry at a concentration of 4-8 ug/ml to stain Epithelial cells of intestinal villus (arrows) in Human Intestine. Magnification is at 400X



#### Immunohistochemistry

**Image 2.** CPS1 antibody was used for immunohistochemistry at a concentration of 4-8 ug/ml. Magnification is at 400X



#### Western Blotting

**Image 3.** CPS1 antibody used at 1.25 ug/ml to detect target protein.