

Datasheet for ABIN629688

anti-DLAT antibody**2** Images[Go to Product page](#)

Overview

Quantity:	100 µg
Target:	DLAT
Reactivity:	Human, Mouse, Rat, Dog
Host:	Rabbit
Clonality:	Polyclonal
Conjugate:	This DLAT antibody is un-conjugated
Application:	Western Blotting (WB), Immunohistochemistry (IHC)

Product Details

Immunogen:	DLAT antibody was raised using a synthetic peptide corresponding to a region with amino acids WTPSSGATPRNRLLLQLLGSPGRRYYSLPPHQKVPLPSLSPTMQAGTIAR
Purification:	Purified

Target Details

Target:	DLAT
Alternative Name:	DLAT (DLAT Products)
Background:	DLAT is dihydrolipoamide acetyltransferase, the E2 subunit of the mammalian pyruvate dehydrogenase complex of the inner mitochondrial membrane. Patients with primary biliary cirrhosis show autoantibodies to DLAT.
Molecular Weight:	71 kDa (MW of target protein)

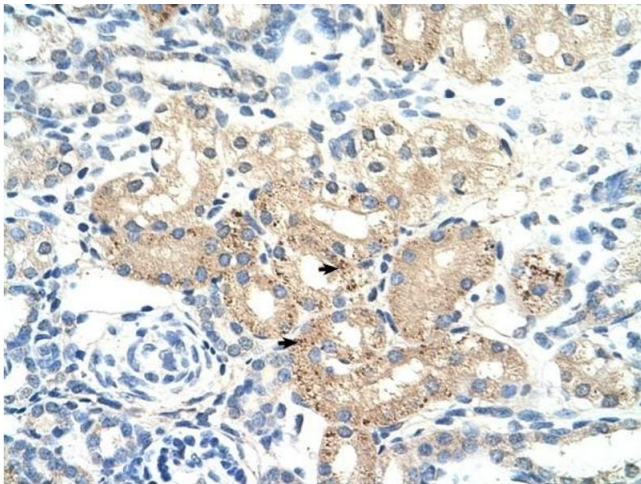
Application Details

Application Notes:	WB: 5 µg/mL, IHC: 4-8 µg/mL Optimal conditions should be determined by the investigator.
Comment:	DLAT Blocking Peptide, catalog no. 33R-10028, is also available for use as a blocking control in assays to test for specificity of this DLAT antibody
Restrictions:	For Research Use only

Handling

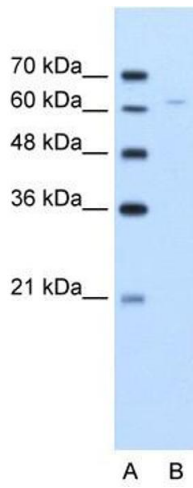
Format:	Lyophilized
Reconstitution:	Lyophilized powder. Add distilled water for a 1 mg/mL concentration of DLAT antibody in PBS
Concentration:	Lot specific
Buffer:	PBS
Handling Advice:	Avoid repeated freeze/thaw cycles.
Storage:	4 °C/-20 °C
Storage Comment:	Store at 2-8 °C for short periods. For longer periods of storage, store at -20 °C.

Images



Immunohistochemistry

Image 1. DLAT antibody was used for immunohistochemistry at a concentration of 4-8 ug/ml to stain Epithelial cells of renal tubule (arrows) in Human Kidney. Magnification is at 400X



Western Blotting

Image 2. DLAT antibody used at 5 ug/ml to detect target protein.