

Datasheet for ABIN629689

anti-MDH1 antibody**1** Image[Go to Product page](#)

Overview

Quantity:	100 µg
Target:	MDH1
Reactivity:	Human, Mouse, Rat, Arabidopsis
Host:	Rabbit
Clonality:	Polyclonal
Conjugate:	This MDH1 antibody is un-conjugated
Application:	Western Blotting (WB)

Product Details

Immunogen:	MDH1 antibody was raised using a synthetic peptide corresponding to a region with amino acids NFSCLTRLDHNRKAQIALKLGVTANDVKNVIIWGNHSSTQYPDVNHAKV
Purification:	Purified

Target Details

Target:	MDH1
Alternative Name:	MDH1 (MDH1 Products)
Background:	Malate dehydrogenase catalyzes the reversible oxidation of malate to oxaloacetate, utilizing the NAD/NADH cofactor system in the citric acid cycle. MDH1 is localized to the cytoplasm and may play pivotal roles in the malate-aspartate shuttle that operates in the metabolic coordination between cytosol and mitochondria.
Molecular Weight:	36 kDa (MW of target protein)

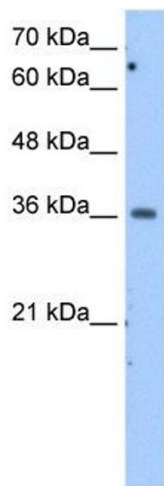
Application Details

Application Notes:	WB: 2.5 µg/mL Optimal conditions should be determined by the investigator.
Comment:	MDH1 Blocking Peptide, catalog no. 33R-6690, is also available for use as a blocking control in assays to test for specificity of this MDH1 antibody
Restrictions:	For Research Use only

Handling

Format:	Lyophilized
Reconstitution:	Lyophilized powder. Add distilled water for a 1 mg/mL concentration of MDH1 antibody in PBS
Concentration:	Lot specific
Buffer:	PBS
Handling Advice:	Avoid repeated freeze/thaw cycles.
Storage:	4 °C/-20 °C
Storage Comment:	Store at 2-8 °C for short periods. For longer periods of storage, store at -20 °C.

Images



Western Blotting

Image 1. MDH1 antibody used at 2.5 ug/ml to detect target protein.