

Datasheet for ABIN629691

anti-Nucleobindin 1 antibody (C-Term)[Go to Product page](#)**1** Image

Overview

Quantity:	100 µg
Target:	Nucleobindin 1 (NUCB1)
Binding Specificity:	C-Term
Reactivity:	Rat
Host:	Rabbit
Clonality:	Polyclonal
Conjugate:	This Nucleobindin 1 antibody is un-conjugated
Application:	Western Blotting (WB), Immunohistochemistry (IHC)

Product Details

Immunogen:	Rat Calnuc antibody was raised using the C terminal Of Rat Calnuc/Rgd:620030 corresponding to a region with amino acids EQPPVLPQLDSQHL
Specificity:	Rat Calnuc antibody was raised against the C terminal Of Rat Calnuc/Rgd:620030
Cross-Reactivity:	Rat (Rattus)
Characteristics:	Rabbit polyclonal Rat Calnuc antibody raised against the C terminal Of Rat Calnuc/Rgd:620030
Purification:	Purified

Target Details

Target:	Nucleobindin 1 (NUCB1)
Alternative Name:	Calnuc (NUCB1 Products)

Target Details

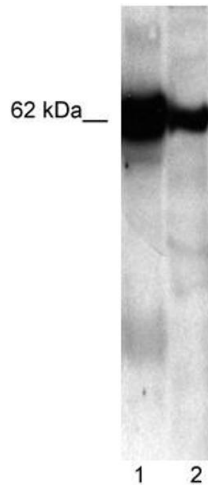
Background:	An extracellular calcium binding protein of the mineralized matrix of bone [Calnuc or RGD:620030]. Also useful as a Golgi marker in immunohistochemistry (1:100 dilution).
Molecular Weight:	54 kDa (MW of target protein)

Application Details

Application Notes:	WB: 5 µg/mL, IHC: 4-8 µg/mL Optimal conditions should be determined by the investigator.
Comment:	Rat Calnuc Blocking Peptide, catalog no. 33R-2673, is also available for use as a blocking control in assays to test for specificity of this Rat Calnuc antibody
Restrictions:	For Research Use only

Handling

Format:	Lyophilized
Reconstitution:	Lyophilized powder. Add distilled water for a 1 mg/mL concentration of Rat Calnuc/RGD:620030 antibody in PBS
Concentration:	Lot specific
Buffer:	PBS
Handling Advice:	Avoid repeated freeze/thaw cycles. Dilute only prior to immediate use.
Storage:	4 °C/-20 °C
Storage Comment:	Store at 2-8 °C for short periods. For longer periods of storage, store at -20 °C.



Western Blotting

Image 1. Rat Calnuc antibody used at 5 ug/ml to detect target protein.