

Datasheet for ABIN629693 **anti-AADAT antibody (N-Term)**

2 Images



[Go to Product page](#)

Overview

Quantity:	100 µg
Target:	AADAT
Binding Specificity:	N-Term
Reactivity:	Human
Host:	Rabbit
Clonality:	Polyclonal
Conjugate:	This AADAT antibody is un-conjugated
Application:	Western Blotting (WB), Immunohistochemistry (IHC)

Product Details

Immunogen:	AADAT antibody was raised using the N terminal of AADAT corresponding to a region with amino acids AVITVENGKTIQFG EEMMKRALQYSPSAGIPELLSWLKQLQIKLHNPPTI
Specificity:	AADAT antibody was raised against the N terminal of AADAT
Purification:	Purified

Target Details

Target:	AADAT
Alternative Name:	AADAT (AADAT Products)
Background:	AADAT is a protein that is highly similar to mouse and rat kynurenine aminotransferase II. The rat protein is a homodimer with two transaminase activities. One activity is the transamination of alpha-amino adipic acid, a final step in the saccaropine pathway which is the major pathway

Target Details

for L-lysine catabolism. The other activity involves the transamination of kynurenine to produce kynurenine acid, the precursor of kynurenic acid which has neuroprotective properties.

Molecular Weight: 47 kDa (MW of target protein)

Application Details

Application Notes: WB: 1.25 µg/mL, IHC: 4-8 µg/mL
Optimal conditions should be determined by the investigator.

Comment: AADAT Blocking Peptide, catalog no. 33R-1601, is also available for use as a blocking control in assays to test for specificity of this AADAT antibody

Restrictions: For Research Use only

Handling

Format: Lyophilized

Reconstitution: Lyophilized powder. Add distilled water for a 1 mg/mL concentration of AADAT antibody in PBS

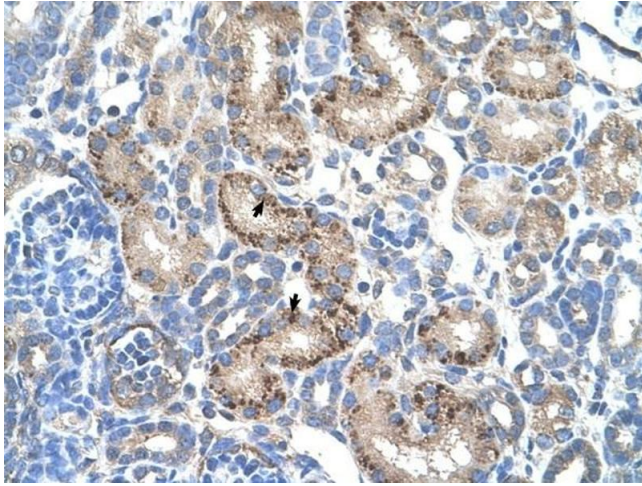
Concentration: Lot specific

Buffer: PBS

Handling Advice: Avoid repeated freeze/thaw cycles.
Dilute only prior to immediate use.

Storage: 4 °C/-20 °C

Storage Comment: Store at 2-8 °C for short periods. For longer periods of storage, store at -20 °C.



Immunohistochemistry

Image 1. AADAT antibody was used for immunohistochemistry at a concentration of 4-8 ug/ml to stain Epithelial cells of renal tubule (arrows) in Human Kidney. Magnification is at 400X



Western Blotting

Image 2. AADAT antibody used at 1.25 ug/ml to detect target protein.