

Datasheet for ABIN629697 **anti-PCK1 antibody (Soluble)**



[Go to Product page](#)

2 Images

Overview

Quantity:	100 µg
Target:	PCK1
Binding Specificity:	Soluble
Reactivity:	Human, Mouse, Rat, Dog
Host:	Rabbit
Clonality:	Polyclonal
Conjugate:	This PCK1 antibody is un-conjugated
Application:	Western Blotting (WB), Immunohistochemistry (IHC)

Product Details

Immunogen:	PCK1 antibody was raised using a synthetic peptide corresponding to a region with amino acids NGFFGVAPGTSVKTNPNAIKTIQKNTIFTNVAETSDGGVYWEGIDEPLAS
Purification:	Purified

Target Details

Target:	PCK1
Alternative Name:	PCK1 (PCK1 Products)
Background:	PCK1 is a main control point for the regulation of gluconeogenesis. The cytosolic enzyme encoded by this gene, along with GTP, catalyzes the formation of phosphoenolpyruvate from oxaloacetate, with the release of carbon dioxide and GDP. The expression of PCK1 can be regulated by insulin, glucocorticoids, glucagon, cAMP, and diet.

Target Details

Molecular Weight:	69 kDa (MW of target protein)
Pathways:	Positive Regulation of Peptide Hormone Secretion, Carbohydrate Homeostasis

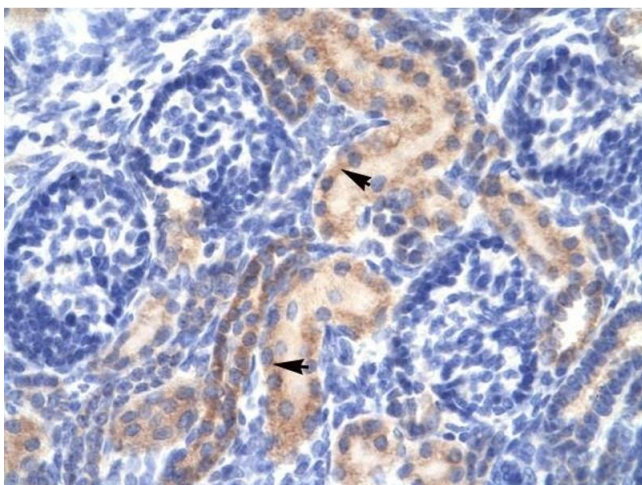
Application Details

Application Notes:	WB: 0.2-1 µg/mL, IHC: 1 µg/mL Optimal conditions should be determined by the investigator.
Comment:	PCK1 Blocking Peptide, catalog no. 33R-6700, is also available for use as a blocking control in assays to test for specificity of this PCK1 antibody
Restrictions:	For Research Use only

Handling

Format:	Lyophilized
Reconstitution:	Lyophilized powder. Add distilled water for a 1 mg/mL concentration of PCK1 antibody in PBS
Concentration:	Lot specific
Buffer:	PBS
Handling Advice:	Avoid repeated freeze/thaw cycles.
Storage:	4 °C/-20 °C
Storage Comment:	Store at 2-8 °C for short periods. For longer periods of storage, store at -20 °C.

Images



Immunohistochemistry

Image 1. PCK1 antibody was used for immunohistochemistry at a concentration of 4-8 µg/ml to stain Epithelial cells of renal tubule (arrows) in Human Kidney. Magnification is at 400X



Western Blotting

Image 2. Western Blot showing PCK1 antibody used at a concentration of 1-2 ug/ml to detect its target protein.