

## Datasheet for ABIN629700 **anti-CDR2 antibody (N-Term)**

### 3 Images



[Go to Product page](#)

#### Overview

Quantity:	100 µg
Target:	CDR2
Binding Specificity:	N-Term
Reactivity:	Human, Mouse, Rat, Dog
Host:	Rabbit
Clonality:	Polyclonal
Conjugate:	This CDR2 antibody is un-conjugated
Application:	Immunohistochemistry (IHC), Western Blotting (WB)

#### Product Details

Immunogen:	CDR2 antibody was raised using the N terminal of CDR2 corresponding to a region with amino acids MLAENLVVEEFEMKEDEPWYDHQDLQQLQLAAELGKTLDDRNTELEDSVQ
Specificity:	CDR2 antibody was raised against the N terminal of CDR2
Purification:	Purified

#### Target Details

Target:	CDR2
Alternative Name:	CDR2 ( <a href="#">CDR2 Products</a> )
Background:	Cdr2 normally sequesters c-Myc in the neuronal cytoplasm, thereby down-regulating c-Myc activity, and suggest a mechanism whereby inhibition of cdr2 function by autoantibodies in PCD may contribute to Purkinje neuronal.

## Target Details

Molecular Weight: 52 kDa (MW of target protein)

## Application Details

Application Notes: WB: 5 µg/mL, IHC: 4-8 µg/mL  
Optimal conditions should be determined by the investigator.

Comment: CDR2 Blocking Peptide, catalog no. 33R-6176, is also available for use as a blocking control in assays to test for specificity of this CDR2 antibody

Restrictions: For Research Use only

## Handling

Format: Lyophilized

Reconstitution: Lyophilized powder. Add distilled water for a 1 mg/mL concentration of CDR2 antibody in PBS

Concentration: Lot specific

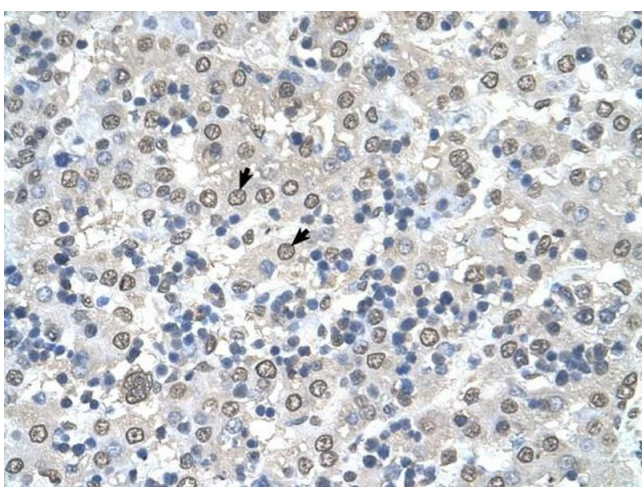
Buffer: PBS

Handling Advice: Avoid repeated freeze/thaw cycles.  
Dilute only prior to immediate use.

Storage: 4 °C/-20 °C

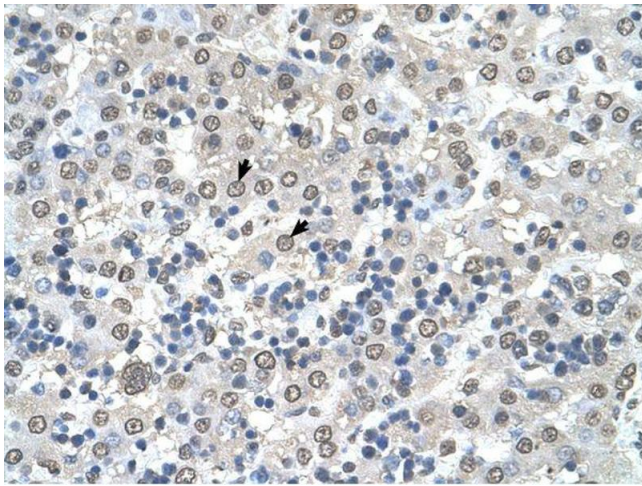
Storage Comment: Store at 2-8 °C for short periods. For longer periods of storage, store at -20 °C.

## Images



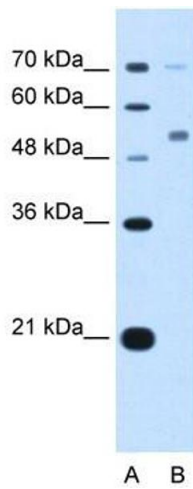
### Immunohistochemistry

**Image 1.** CDR2 antibody was used for immunohistochemistry at a concentration of 4-8 ug/ml to stain Hepatocytes (arrows) in Human Liver. Magnification is at 400X



### Immunohistochemistry

**Image 2.** CDR2 antibody was used for immunohistochemistry at a concentration of 4-8 ug/ml. Magnification is at 400X



### Western Blotting

**Image 3.** CDR2 antibody used at 5 ug/ml to detect target protein.